

57th Annual Arizona Conference on Roads & Streets

TIME



"Transportation and Infrastructure Moving Arizona's Economy"

March 19, 20 and 21, 2008
Westin La Paloma Resort
3800 East Sunrise Drive, Tucson, AZ

"Thank You" PBS&J – 2008 Roads & Street Program Sponsor



Retain This Official Program
For Your Files & Professional Development Hours

"Thank You" to the following Major 2008 Roads & Streets Sponsors

Converse Consultants – Name Tag Sponsor

Fugro Consultants, Inc. – Portfolio Sponsor

Stanley Consultants – Opening Reception Sponsor

Psomas – Dinner Reception Sponsor

Achen-Gardner Engineering, LLC – Dessert Party Sponsor

PBS&J – Program Sponsor

"Thank You" Coffee Break Sponsors

Ames Construction, Inc.
Kimley-Horn and Associates, Inc.
TranSystems Corporation
Wheat Scharf Associates



"Thank You" Continental Breakfast Sponsors

CADsoft Consulting
CH2M Hill
CMX
Folk & Associates, P.C.
Gannett Fleming, Inc.
Michael Baker Jr., Inc.
Parsons Transportation
URS Corporation

57th Annual Roads & Streets

*All Session Times/Speakers Are Subject To Change
Attendees & Guests Must Wear A Name Badge to Enter All Seminar and Trade Show Areas
Children Are Not Permitted in the Trade Show or Seminar Areas*

Wednesday, March 19, 2008

3:00 to 5:30 p.m.
Pavilion

Welcome by Bob Hollis, Division Administrator
of the Arizona Division of FHWA

The Transportation Vision by Si Schorr, Chairman,
Arizona State Transportation Board
Update on State Framework Studies by Victor Mendez,
Director, Arizona Department of Transportation
& John McNamara, Management Consultant
David Martin, TIME Coalition (*Transportation & Infrastructure Moving Arizona Economy*)

Keynote Speaker ... "Oxygen Not Included" by Alison Levine

5:30 to 7:30 p.m.

Roads & Streets Opening Reception Sponsored by Stanley Consultants
Arizona Ballroom
Meet Your Friends at the Trade Show!!!



7:00 a.m. – Thursday, March 20, 2008

Registration // Continental Breakfast // Breaks in Trade Show // Arizona Ballroom
"Thank You" Continental Breakfast Sponsors
and
Break Sponsors Throughout the Conference

8:30 to 9:30 a.m. – Thursday, March 20, 2008

⇒ Growth and Development in Southern Arizona: Responding to the Challenges ...

by John M. Bernal, Deputy County Administrator for Public Works, Pima Co. Public Works Administration >>
A review of local government response to growth and development pressures in Southern Arizona, especially Pima County and the City of Tucson. Collaboration between counties and cities in land use planning and infrastructure development is a must. Transportation planning, together with planning for water/wastewater, public and private utilities, and community amenities (parks, open space, and public facilities), have increased in importance.

... Growth and Future Development in Pinal County by Mayor Robert "Bob" Jackson, City of Casa Grande >> With emphasis on transportation, will report on recent growth and future development in Pinal County; especially the cities of Casa Grande and Maricopa. Murphy Room – Moderator Dale Richards

⇒ Current and Future Pavement Design Practices – State and County Perspectives

by Paul Burch, P.E., Pavement Design Section Engineer, ADOT; Tom Kilargis, P.E., Division Manager, Field Engineering, Pima Co. DOT; and John Shi, PhD, P.E., Materials Engineer, Maricopa Co. DOT >> State and County perspectives will be presented on the state of the practice of pavement design within the Arizona DOT, Pima County and Maricopa County DOT's. Current design methodology and future implementation plans for the "Mechanistic Empirical Pavement Design Guide" will be discussed as well as ongoing changes to specifications.

[Cottonwood Room](#) – Moderator Bruce Kay

⇒ Small Business Enterprise Program for Maricopa County ...

by Andres Chagolla, Manager, MCBiz-Maricopa County Materials Management >> Maricopa County's Small Business Enterprise Program facilitates opportunities in Maricopa County's procurement activities and promotes growth for small business enterprises with fewer than 100 employees or less than \$4 million in annual gross revenues within the last fiscal year. They partner with Article 5 Agencies to give consultant and contractors opportunities to learn how to do business with them, and to give the vendors an opportunity to meet the project managers, engineers, MCBiz folks, etc.

... [Pathway to Certification and Public Procurement](#) by Leondra Price and Dexter Ngai, City of Tucson, Office of Equal Opportunity Programs >> The workshop is offered to contractors, sub-contractors, existing business-owners and/or emerging business-owners who are interested in learning how to become a Certified Minority and/or Woman-owned Business Enterprise that are eligible to do business with the City of Tucson through the MWBE program and the City's procurement process. The workshop will include: 1) How to Get Certified and Form Overview; 2) Understanding the Procurement Process; 3) Where to Find Bid Opportunities; 4) Marketing Tips; and 5) On-line and Other Resources

[Finger Rock Room](#) – Moderator Rosa Olivas-Naymik

⇒ Introduction to ADOT's Post-Construction Best Management Practices (BMP)

[Manual](#) by Wendy Terlizzi, Water Quality Manager, ADOT – OES; Leroy Brady, RLA, FSLA, Chief Landscape Architect and Manager, ADOT – Roadside Development; and Ed Latimer, PhD, P.E., Technical Director and PM, AMEC >> As required by ADOT's Statewide Stormwater Management Plan (SSWMP), a Post-Construction Best Management Practices (BMP) Manual has been developed to assist roadway planners and designers in selecting appropriate post-construction, or permanent, structural BMPs on ADOT projects (new and redevelopment) throughout Arizona. Post-Construction BMPs are intended to provide long-term, effective off-road erosion control, roadway drainage conveyance and water quality/treatment BMPs. The presentation will introduce and briefly discuss the Manual.... [Wildlife Connectivity Opportunities for Integration into](#)

[Transportation Projects: The Past, The Present and The Future](#) by Bruce D. Eilerts, Natural Resources Program Manager, ADOT – OES; Siobhan Nordhaugen, Natural Resources GIS Specialist, ADOT – OES; and Ray Schweinsburg, Research Program Supervisor, AZGFD >> The phenomenal growth of Arizona's human population, economy and infrastructure present challenges to the maintenance of natural ecosystems and wildlife populations that constitute an important part of the State's wealth. In particular, roads, urbanization, canals, railways, energy corridors and activities of illegal migrants and border security operations not only destroy habitat, but create barriers that isolate wildlife populations and disrupt ecological functions such as gene flow, predator-prey interactions, and migration. With early collaborative consideration, the opportunity is created to resolve environmental issues pertaining to wildlife connectivity and wildlife-vehicle collisions while reducing project development costs. Utilization of the award-winning Arizona's Wildlife Linkages Assessment is a strategy that promises to benefit all of Arizona. Wildlife connectivity is considered in the Governor's Growth and Infrastructure Initiative and is a critical subcommittee for the Western Regional Governor's Association.

[Indigo Room](#) – Moderator Todd Williams

⇒ **Railroad Permitting Issues and Solutions** by Luis Heredia, Director of Corporate Relations, UPRR; John Hovanec, UPRR AVP Engineering Design; Jim Smith, UPRR Manager Industry & Public Projects; and Melvin Thomas, Manager of Public Projects, BNSF Railway >> A panel discussion for governmental agency CIP Managers, developers, design consultants and contractors discussing issues that agencies, designers and contractors may encounter with railroad permitting processes. This will include discussions on utility permitting, licensing, flagging, easements, etc. The whole process and estimated timing will be discussed.

***Verberna Room** – Moderator Al Field*

⇒ **County Engineers Update – 3 Hour Session ...** Want to know what is ticking in our counties around the state? Join the Arizona Association of County Engineers(AACE) as they present the latest projects and issues they are involved in. >> Presenters include Nick Hont, Mohave Co. and current President of AACE; Ferrin Crosby, Apache Co.; Patricia Morris, Cochise Co.; Dale Wegner, Coconino Co.; Steve Sanders, Gila Co.; Michael Bryce, Graham Co., Greg Stanley, Pinal Co.; Albert Letzkus, Pima Co.; Roger Patterson, Yuma Co.; Tim Stotler, Yavapai Co.; Philip Ronnerud, Greenlee Co.; Michael Sabatini, Maricopa Co.; James Matteson, Navajo Co.; Mike Speedie, La Paz Co.; and Scott Altherr, Santa Cruz Co.

***Pavilion** – Moderator Natayla Hyland*

Thursday, March 20, 2008 – 9:45 to 10:45 a.m.

⇒ **Maricopa County – Through the Looking Glass ...** by Joy Rich, AICP, Deputy Co. Manager and Planning & Development Director, Maricopa Co. Regional Development Service Agency >> This session provides a concise look at historical growth in Maricopa County and the major factors that have influenced development to date in one of the fastest growing counties in the nation. Focus then turns to current challenges including air quality, transportation infrastructure, and the environment. Finally, upon this framework, we'll examine current trends in land use law, technology, administrative policy, and market forces that will steer development in the future, as well as the corresponding challenges we can expect to encounter. This presentation is ideal for land use, transportation planning, economic development and management professionals across the board. ...

Statewide Mobility Reconnaissance Study by Bob Hazlett, P.E., Senior Engr. Maricopa Assoc. of Governments >>In 2007, the Arizona COG and MPO Association developed the Statewide Mobility Reconnaissance Study. The purpose of this study was to assess the state's transportation system, develop a statewide transportation planning tool, and identify opportunities for improving near-term and long-range transportation planning decisions and their relation upon the continuing economic growth in Arizona. The study was completed in January 2008. This presentation will describe the findings of this study, present results from preliminary 2050 travel demand estimates for traffic on the statewide transportation network, and discuss the project recommendations for statewide transportation planning. ***Murphy Room** – Moderator John Hauskins*

⇒ **Combining Laser Technology with Photogrammetric Mapping** by Joseph M. Bartorelli, President, Vertical Mapping Resources, Inc. >> The discussion will focus on combining traditional and softcopy photo-grammetry with land-based and airborne laser modeling. Several different projects and scopes will be visited. ***Cottonwood Room** – Moderator Chris Mexas*

⇒ **Public Involvement – Keeping Your Project on Track!** by Carl J. Burkhalter, P.E., Senior Resident Engineer, ADOT Flagstaff District; Teresa Welborn, ADOT Deputy Public Involvement Director; Jackie M. Keller, RLA, ASLA, Director of Community Planning and Design, Logan Simpson Design, Inc.; and Alicia Robertson, President, PSM² >> What works? What doesn't? How do you develop a public involvement plan that is suitable for your project? Learn and experience public involvement techniques from knowledgeable professionals. This workshop will give you the tools you need to plan your next public meeting.

***Finger Rock Room** – Moderator Kent Dibble*

⇒ Winter Storm Management of Arizona State Highways: Overview of Ongoing Environmental Assessment and Adaptive-Management-Based Operations Manual

by Emily Christ, MEP, JD, Natural Resources Planner, ADOT – OES; Joel Miller, Maintenance Superintendent, ADOT – Globe District; and Ed Latimer, PhD, P.E., Technical Director and PM, AMEC >> A formal assessment of ADOT's winter storm management program was completed in 2001. By the summer of 2004, a draft Environmental Assessment (EA) had been developed to address ADOT's ice and snow management practices. Recent evaluation of the draft EA determined that revisions to the document's project alternatives were necessary. ADOT is currently revising and finishing the remaining analysis and process for the EA, will carry out the stakeholder and public review process in Spring 2008, and, ultimately, will prepare a Winter Storm Management Operations Manual based on the EA findings. These two important documents will provide the foundation for ADOT's winter storm management program, ensuring the level of service remains high, resource impacts are reduced, and compliance with various environmental laws, regulations, and policies is achieved. This presentation will provide an overview of the project's initial efforts, including a timeline for completion.

[Indigo Room](#) – Moderator Julie Christoph

⇒ **Governmental Agency Permitting Issues and Solutions** by Ruben Ojeda, Arizona State Land Department, ROW Section Manager; Tom Fitzgerald, Central Arizona Project, Lands Administrator; Kevin Harper, U.S. Bureau of Land Management; and Peter Castaneda, U.S. Bureau of Reclamation, Division Manager, Water & Land Division >> A panel discussion for agency planners, developers, design consultants and contractors on how to expedite the permitting for projects crossing government agency rights-of-way.

[Verbena Room](#) – Moderator Al Field

⇒ County Engineers Update

Continued in the Pavilion Room

Thursday, March 20, 2008 – 11:00 to Noon

⇒ **Governor's Growth Cabinet ...** by Shannon L. Scutari, Governor's Policy Advisor >> Overview of the Governor's Growth Cabinet and the Smart Growth and Development Plan that includes the Smart Growth Scorecard, Statewide Multi-Modal Transportation Plan and State Trust Land Reform... **Economic**

Forecast by Jim Rounds, Senior Vice President, Elliott D. Pollack & Company >> Mr. Rounds will provide the latest economic outlook for the state including a discussion of the long term growth potential for the area and the resulting long term infrastructure needs.

[Murphy Room](#) – Moderator John Hauskins

⇒ **AASHTO's LRFD Design and Construction Specifications** by Jim Pyne, P.E. (Chair), T. Y. Lin; Naresh Samtani, P.E., Ph.D., NCS Consultants; Shafi Hasan, P.E., ADOT Bridge Group; and Norm Wetz, P.E., ADOT Geotechnical Design >> ADOT's Bridge Group has completed their supplement to the AASHTO LRFD Bridge Design Specifications for superstructure design while work on the substructure portion is in progress. ADOT's Geotechnical Section is near completion on their supplement and implementation plan. In an effort to coordinate work between the bridge engineers and the geotechnical engineers, a Task Force was formed by ADOT's Geotechnical Group to assist in finalizing their guidelines as a supplement to the AASHTO LRFD Bridge Design Specifications. The panel will present the impacts of the new design standards from the structural and geotechnical engineer's and owner's perspectives and discuss the work of the Task Force.

[Cottonwood Room](#) – Moderator Bruce Kay

⇒ **Ellsworth Loop Road Improvement District: Lessons Learned** by Kevin Roberts, VP, Dibble Engineering; Dick Schaner, Special Transportation Project Manager, Town of Queen Creek; and J R Pooler, President, Pooled Resources >> The Ellsworth Loop Road Improvement District project is one of the largest Improvement Districts to date in the State of Arizona totaling approximately \$60 Million. The project included approximately 4 miles of 6 lane arterial roadways, 2 structures over Queen Creek Wash, and a grade-separated crossing of the Union Pacific Railroad. The project "paved the way" for large commercial development in the Town of Queen Creek, including major developments by Vestar and Westcor. How did the Town of Queen Creek make this project happen, and what are the anticipated long-term benefits to the Town? Come learn why Improvement Districts are emerging as a preferred funding source for public projects.

[Finger Rock Room](#) – Moderator Susan Detwiler

⇒ **Environmental Challenges of Urban Transportation Projects: A Case Study of Valley METRO Light Rail** by Dwight Clark, Sr. Environmental Engineer, Ninyo & Moore >> A discussion about the light rail environmental concerns (post acquisition) encountered during construction, including concerns with development on a state superfund site. Valley METRO Light Rail construction subcontractors noted numerous environmental issues during construction that were not addressed in the acquisition stages of the project. The construction crews uncovered numerous underground storage tanks, areas of impacted soils and wastewater treatment systems. Additionally, the project was designed to construct through a state superfund site. The majority of these problems were not noted during the acquisition of the properties. However, many features were encountered during construction. The environmental issues encountered created management issues on the project including schedule concerns and associated delay costs.

[Indigo Room](#) – Moderator Linda Walsh

⇒ **The Value of Communication – Governmental Projects from the Utility Perspective**

by John Rael, Arizona Public Service Company, Government Liaison; John Settembre, Qwest Communications, Manager Network Ops-Cable; Mariann Ward, Salt River Project, Power Manager, Customer Improvements; Shari Olsen, P.E., Distribution Engineer at Southwest Gas Corporation, Southern Arizona Division; and Cynthia Garcia, Tucson Electric Power Company, Governmental Projects >> A panel discussion for governmental agency CIP Managers, developers, design consultants and contractors. When working on a project with many entities involved, it is important to keep the lines of communication open among all parties. Many times we take for granted that plans and letters tell everything we need to know when that is not always the case. To have a successful project we must work together as partners. This will reduce the possibility of a small problem becoming a bigger problem and reduce or minimize utility damages and delays.

[Verbena Room](#) – Moderator Kimberly Carroll

⇒ **County Engineers Update**

Continued in the Pavilion Room

Noon to 1:30
Box Lunch in Trade Show
Arizona Ballroom



Thursday, March 20, 2008 – 1:30 to 2:30 p.m.

⇒ **Statewide Growth Panel Q & A Panel** by John Bernal, Bob Hazlett, Bob Jackson, Joy Rich, Jim Rounds, and Shannon Scutari *Murphy Room – Moderators John Hauskins and Dale Richards*

⇒ **Rescue Engineering With Top Off Exercise** by Fred Nelson, P.E., VP, Gervasio & Associates and Embe Kugler, Emergency Services Coordinator, Arizona Department of Emergency Management >> Summarizing the role of FEMA structural engineers and private engineers *SEER* (Structural Engineers Emergency Response committee) to natural disasters (earthquake, hurricane, mudslide, tornado, tsunami) and to weapons of mass destruction – CBRNE (chemical, biological, radiological, nuclear and explosive devices). Discussion will include a summary of the activities associated with Top Off where a mock dirty bomb was detonated at the intersection of SR 101 and SR 202 at the Salt River with prevailing winds to the southeast affecting portions of Tempe and Mesa. *Verbena Room – Moderator Jean Nehme*

⇒ **Rehabilitation of Historic Hassayampa River Bridge** by Jerry A. Cannon, P.E., Principal/VP, TranSystems >> The project consists of the rehabilitation of a Yavapai County two span bridge over the Hassayampa River. The presentation will include environmental issues, repainting of the bridge, red lead paint mitigation, replacement of wooden bridge deck, heat straightening bent members, and rehabilitation of bridge bearings. It will also include what was learned on the project and what could have been done better. *Finger Rock Room – Moderator John Gleason*

⇒ **City of Phoenix M/W/SBE Program Review** by Wylie Bearup, City Engineer and Mark Escobedo, Management Assistant II >> Presentation will address the history, background, and current status of the City of Phoenix's Minority-Owned, Women-Owned, and Small Business Enterprise Program. The City of Phoenix has operated a legally-mandated disparity program for the last 14 years. This presentation will discuss the history of the program, provide background on the creation of the program, share results of intervening disparity studies, describe the ongoing goal setting process, discuss current status of the program, and identify any new initiatives that are being considered. *Indigo Room – Moderator Rosa Olivias-Naymik*

⇒ **ACC Requirements for Up-grading a Rail/Highway Crossing** by Brian H. Lehman, Supervisor of Railroad Safety, Arizona Corporation Commission >> This Power Point Presentation outlines the requirements and process for Commission approval of a modification (improvement) to an existing rail/highway grade crossing. Also includes the powers of the Commission regarding rail/highway grade crossings. *Cottonwood Room – Moderator Al Field*

⇒ **Got Dust? – Emerging Fugitive Dust Control Techniques** by Mannie L. Carpenter, P.E., Senior Project Manager, GEC; Stacey J. LeBlanc, Project Manager, GEC; and Darcy Anderson, Environmental Group Manager, Kleinfelder >> The potential loss of federal highway funds has resulted in increased regulatory pressure on state, tribal, county and local governments to reduce emissions of particulate materials (PM). Dust from unpaved roads and construction of roads and highways has been identified as significant sources of PM emissions. Consequently, higher emphasis will be placed on controlling PM emissions from these sources. This presentation will give information on the latest innovative dust suppression techniques and how to determine the most cost-effective control strategy for various projects. *Palo Verde Room – Moderator Cyndi Newman*

⇒ **Special Presentation for Spouse/Significant Other Registrants: Making Sense of the Digital Photo World – Part 1** by Gladys Marietti, Creative Memories Consultant >> Cyberspace has become the new shoebox for our memories. Are you bombarded with information and do not know how to make sense of it? Conflicting product claims can result in paralysis and no action at all. Come and join this virtual discussion for fun and entertaining answers to your digital questions! Hour One: Start with the basics – What all the terminology means. How to take better photos for your work projects and personal enjoyment. How to get images off your camera. How to save and organize your images.

Astor Room

Thursday, March 20, 2008 – 2:45 to 3:45 p.m.

⇒ **Context Sensitive Solutions (CSS)** by Phil Myrick, VP, Project for Public Spaces (PPS) and Ken Davis, FHWA Arizona Division >> Phil will make a presentation on Context Sensitive Solutions. What it is, where it's used and successes happening around the country. He has worked with the New Hampshire DOT to train and help implement a new project development process by acting as a facilitator between the DOT and its client communities on new projects as the DOT transitioned to CSS. Phil led the development of a new website on CSS/Design under a contract with the FHWA. Phil will include in his presentation the Place Making process PPS has developed to get stakeholders to go into the field and inventory the project early in the development process. FHWA will provide a presentation supporting CSS, confirming FHWA commitment to CSS and providing update of FHWA CSS activities.

Murphey Room – Moderator Tom Schmitt

⇒ **Glendale's Super Bowl Planning and Operations ...** by Debbie Albert, Principal Traffic Engineer, City of Glendale >> The City of Glendale hosted the world's largest sporting event on February 3, 2008. This presentation will describe the efforts of the city in preparing and executing the transportation management plan. Specifically, the planning process, development of the plan, how it was implemented, and the results of two-plus years of work will be covered. ... **Tucson Interim Traffic Operations Center: Helping Tucsonans Through Growing Pains** by Micah Henry, P.E., PTOE – ITOC Engineer Manager, ITS Engineers & Constructors >> The Tucson Interim Traffic Operations Center (ITOC) was designed to help mitigate traffic during the I-10 Widening Project in Tucson. Operations commenced during the summer of 2007 when the ITOC began functioning on a 24-hour basis. ITOC operators work in a real-time atmosphere coordinating response efforts with police, fire, towing service and ADOT. The scope includes responding to incidents on both surface streets and the freeway, where operators use over 65 cameras, 12 traffic signals, and 2 DMS to help keep traffic moving. With almost a full year of experience, this presentation will provide an overview of objectives, system components, operations, and experiences.

Verbena Room – Moderator Kimberly Carroll

⇒ **UDOT Accelerated Bridge Construction** by Richard Miller, P.E., Structures Design Engineer, Utah Department of Transportation >> The presentation will focus on the Accelerated Bridge Construction program in the Utah Department of Transportation. A brief history will be included so participants may observe the process and some of the issues that have been resolved with design and construction. Current and future projects will be the focus with emphasis for discussion. UDOT is also in the process of developing ABC standard drawings. The plan for the future of ABC in the Utah Department of Transportation will be discussed. User cost and project acceleration discussion will show how UDOT has used these criteria to speed up project delivery. Time will be allotted for questions and answers.

Finger Rock Room – Moderator John Gleason

⇒ **Arizona Work Zone Safety and Mobility Policy: Keeping Arizonans Safe and On Time Through Work Zones** by Karen King, Transportation Safety Engineer, FHWA AZ Division and Scott Orrahood, Traffic Standards Engineer, ADOT Traffic Group >> Growing congestion on many roads, and an increasing need to perform rehabilitation and reconstruction work on existing roads already carrying traffic, are some of the issues that have led to additional, more complex challenges to maintaining work zone safety and mobility. To address these issues, FHWA Work Zone Safety and Mobility Rule provides a decision-making framework that facilitates comprehensive consideration of the broader safety and mobility impacts of work zones across project development stages, and the adoption of additional strategies that help manage these impacts during project implementation. Arizona DOT finalized their agency-level Work Zone Safety and Mobility Policy in October 2007 and is in the process of developing implementation guidelines that will address areas such as transportation management plans, work zone impact assessments, and public outreach techniques. *[Indigo Room](#)* – Duane Eitel

⇒ **Working Safely Near METRO Light Rail** by Henry Miranda, Safety Manager, ACI >> This presentation will discuss the hazards associated with working within and near the light rail alignment. Henry will inform attendees of new procedures, hazards, and laws regarding the light rail in addition to providing a list of who to contact prior to working within the light rail alignment. *[Cottonwood Room](#)* – Moderator Beverly McCormick

⇒ **State of the Practice of Modern Roundabouts** by Troy Pankratz, P.E., Project Manager, Ourston Roundabout Engineering, Inc. >> What has been learned from success and shortcomings in roundabout design? A collection of case studies of modern roundabout successes will be showcased including indications of what has been learned from these experiences. The presenter will illustrate geometric design pitfalls of in-service roundabouts and will document techniques for revising roundabouts to repair ineffective geometry to improve operations. Find out about the state of the practice and guidance for the planning and design of roundabouts. See how other agencies have embarked on aggressive safety programs using roundabouts. Review how another agency has been addressing intersection safety problems and how roundabouts could reduce injury crashes. *[Palo Verde Room](#)* – Moderator David Duffy

⇒ **Special Presentation for Spouse/Significant Other Registrants: Making Sense of the Digital Photo World – Part 2** by Gladys Marietti, Creative Memories Consultant >> Hour Two: More helpful information – Options for printing your photos. How to share images with family and enjoy them more. Simple systems that work from the creation of digital images to the completion of keepsake albums. *[Astor Room](#)*

Thursday, March 20, 2008 – 4:00 to 5:00 p.m.

⇒ **Hot Central Plant Recycling with RAP** by Jon A. Epps, Recycling Manager, Granite Construction Co. >> The use of reclaimed asphalt pavement (RAP) in Hot Central Plant Recycling operations will be discussed. The history of this process, sources of RAP, RAP processing and plant operations will be demonstrated. Mix design, performance history, economics, conservation and presentation benefits will be defined. *[Murphey Room](#)* – Moderator Amanda McGennis

⇒ **Dams & Roads** by Michael Johnson, Dam Safety in Arizona, Arizona Department of Water Resources; Michael R. Chase, VP, Stanley Consultants, Inc.; and Laurie Miller, Pres., LTM Engineering, Inc. >> Mike Johnson will lead a general discussion of Dam Safety in Arizona including interactions with roads (i.e. roads being downstream hazards and dams which act as roads). Mike Chase will talk about a portion of the Red Mountain Freeway Project, L202 between Power Road and University Drive which is being constructed within the flood pool of the existing Spook Hill Flood Retarding Structure and a new jurisdictional dam which is being constructed upstream of the freeway to protect drivers from flooding. Laurie Miller will conduct a general discussion of Emergency Action Plans (EAP), purpose and need, inter-agency coordination and preparation of detailed action plans. *[Verbena Room](#)* – Mike Chase

⇒ **Grand Canyon Skywalk** by Kenneth (Bill) Karren, Jr., S.E., Principal Structural Engineer, Lochsa Engineering >> The presentation will describe the structural concept development and challenges in design and construction of the steel and glass Horseshoe Bridge perched 4,000 feet above the canyon floor.
Finger Rock Room – Moderator John Gleason

⇒ **New Transportation Corridor Analysis & Decision Making Techniques ...** "Corridor Optimization – Streamlining the I-73 EIS Process" by Melvin S. Brown, CEP, VP and Director, Southern Group Environmental Studies, Wilbur Smith Associates. ... **"Using Technology to Identify and Preserve Future Transportation Corridors in the Reno Metropolitan Area"** by Jack Lorbeer, Planning Manager, Regional Transportation Commission, Reno, Nevada and Tom Anderson, Regional Manager, Quantm Pty. Ltd., Pleasant Hill, California
Indigo Room – Moderator Bob Hazlett

⇒ **The Good, the Bad, and the Ugly: Arizona Road Safety Assessments** by Mike Blankenship, P.E., AZ RSA Program Manager, ADOT Highway Enhancements for Safety >> The Arizona Road Safety Assessment Program conducted 15 RSAs on city, county, state and tribal roads during the first year of the program. This session will highlight observations and recommendations from those RSAs including good practices and safety to address these issues, and estimates of expected crash reduction. The RSA Program is a free service available to all agencies in Arizona.
Cottonwood Room – Moderator Lori Hicks, AZ LTAP

⇒ **Improving Today, Planning Tomorrow** by Mohamed Youssef, P.E., P.T.O.E., Traffic Signal & Lighting Engineer, ADOT/Traffic Operations Section >> Transportation system is critical to our economy and our quality of life. On the road to a better tomorrow, what can we do together as professional engineers to enhance safety, reduce congestion, and meet our budget constraints?
Palo Verde Room – Moderator Bob Mickelson

⇒ **Active Projects Status Updating – Then and Now – A Process Improvement Story** by Jeff Ross, Information Tech. Specialist 4, ADOT – Program and Project Management Section >> A brief history about the Program and Project Mgmt Section and our Active Project Status Updating (APSU) process. A com-parison of how the work was done, then vs. now. What we did to transform a timely, error prone process to an automated, highly reliable and user friendly system. Content to focus on: How we process schedule updates to activities on projects and report them monthly; how we changed our process while keeping up existing production; and how you can do the same ... **Capturing Construction Cost Estimates During the Design Process Using the Estimated Engineering Construction Cost (E2C2) Application** by Dean R. Mees, Transportation Engr. Specialist, ADOT >> The Estimated Engineering Construction Cost (E2C2) application was developed with the primary objective of providing an efficient way of preparing construction cost estimates at each design stage and provide a central repository of this information for reporting and analysis purposes. This session will provide a brief description of the application architecture and how ADOT is using this information during the design process. We will also look at future enhancements, making the application more user friendly and additional reporting to assist ADOT in managing the Five Year Program.
Aster Room – Moderator Linda Walsh



Reception/Buffer 5:15 to 6:30 – Sponsored by Psomas
Arizona Ballroom

Dessert Party 6:45 to 8:00 p.m.
Sponsored by Achen-Gardner Engineering
Pavilion Room

Friday, March 21, 2008 – 8:30 to 9:30 a.m.

7:30 Contiental Breakfast in Meeting Room Foyers

⇒ **US-60, Add Lanes, Gilbert Road to Power Road; H664901C** by Alan Sanderson, Traffic Engineer, City of Mesa; Tom Billings, Sr. Project Manager, FNF, Inc.; Brock Barnhart, Community Relations Officer, ADOT; and Bob Wade, Sr. Resident Engineer, ADOT >> Flexibility that good coordination provides. ADOT's US-60's very restrictive traffic control Specials on US-60 which intended to minimize disruptions to be public; FNF's "better idea" on managing closures; the City of Mesa's active participation in developing the alternatives; ADOT Construction's extensive use of VMS; and CCP's facilitating the process through TSMs, proactive / pre-emptive communications with merchants and residents, graphic support, and active participation in formulating the plans. Benefits to all: Contractor efficiencies; reduced ADOT expenses; a well informed public; well informed elected and appointed officials; etc. AND FEW, IF ANY, PHONE CALLS.

Murphey Room – Moderator Amanda McGennis

⇒ **I-10 Phoenix-Tucson Bypass Study ...** by Arnold Burnham, Planning Manager, ADOT and David French, Project Manager, URS Corporation >> The Arizona State Transportation Board requested a preliminary assessment of the long term need for and feasibility of a new corridor that would serve as a bypass for I-10 traffic in Phoenix and Tucson. The general study area stretched from west of Buckeye to east of Willcox. Several alternative corridors were identified and an extensive public and stakeholder involvement process was carried out. The study became quite controversial because many people objected to the idea of a new corridor through environmentally sensitive lands ... **MCDOT Enhanced Parkway Study Phases 1 and 2** by James W. Witkowski, PhD, Morrison-Maierle, Inc. >> These projects evaluated the traffic operations performance of unconventional alternative intersection designs for the new "Arizona Desert Parkway" concept developed for the Maricopa Association of Governments and the Maricopa County Department of Transportation as part of the I-10 Hassayampa Valley Roadway Framework Study (2007). Alternative unconventional intersection designs included the use of indirect or Michigan left-turns, Continuous Flow Intersections, and Single Point Urban Interchanges (SPUI). Alternatives were tested against varying levels of congestion to estimate the daily and hourly capacity of a hypothetical corridor.

Verbena Room – Moderator Dave French

⇒ **Reflections on the I-35W Bridge Collapse** by Tim Sorel, FHWA Division Administrator, Minnesota >> The emergency response, recovery, and rebuilding efforts associated with the I-35W bridge collapse were truly remarkable. Mr. Sorel will discuss how the Federal, State, and Local agencies partnered to achieve this level of success and why this happened. In addition, he will discuss the impact of the collapse on the transportation community at all levels.

Finger Rock Room – Moderator John Gleason

⇒ **Phoenix Sky Harbor International Airport's Automated Train** by Jay DeWitt, Project Administrator, City of Phoenix – Aviation Department >> Sky Harbor Boulevard and the surrounding roadway system accommodate all traffic at Phoenix Sky Harbor International Airport. This roadway is the only way for passengers, employees, airport business and the public to access the airport terminals. The airport will continue to improve its roadway system, but there is finite capacity and a second mode of transportation will be necessary in the near future. An Automated Train is the most cost effective and efficient way to meet this demand, keep pace with future growth in the metro Phoenix area, and maintain customer service levels.

Indigo Room – Moderator Linda Walsh

⇒ **Ironwood-Gantzel Roadway Improvement Project** by Ahmad Omais, Design Project Manager, Kimley-Horn; Gregory Stanley, Deputy Director/County Engineer, Pinal County; and Jim Poggemeyer, Sundt Construction >> The \$63.4 million Ironwood-Gantzel Roadway Improvement Project comprises 15 miles of heavily traveled arterial roadway beginning at US 60 and running south to Bella Vista Road. The project's purpose was to improve the capacity, public safety and operational characteristics of the roadway. Phases A, B1, B2, B3, B4 and C included roadway reconstruction from two lanes to four and six lanes with a median, pavement installation, curb and gutter, traffic signals, drainage facilities and extensive community outreach.

Cottonwood Room – Moderator Bob Mickelson

⇒ **ADOT District Engineer Update – 3 Hour Session ...** Find out how the ADOT District Engineers keep their districts moving and how they are addressing their latest challenges. Sam Elters, ADOT State Engineer will give an overview of the construction program. John Harper, Flagstaff; Jerry Barnes, Globe; Lynn Johnson, Holbrook; Michael Kondelis, Kingman; Robert Samour, Phoenix Construction; Tim Wolfe, Phoenix Maintenance; Dallas Hammit, Prescott; Bill Harmon, Safford; Greg Gentsch, Tucson; and Paul Patane, Yuma, will each present a brief update from their district.

Pavilion Room – Moderator Natalya Hyland

Friday, March 21, 2008 – 9:45 to 10:45 a.m.

⇒ **An International Perspective on Construction Productivity and Labor Cost** by Dr. Ken Walsh, AGC-Paul S. Roel Chair in Construction Engineering and Management, San Diego State University >> Direct comparison of construction costs in an international perspective have traditionally not been available, mostly because of lack of data. The World Bank conducts a series of international econometric measurements as part of its poverty identification mission, including the so-called purchasing power parity. These measurements have traditionally left construction out, because it is such a difficult industry for making comparisons for a number of reasons. However, a new method has been deployed for conducting construction cost comparisons. Dr. Walsh was instrumental in the development of this method. He will give a brief background on international construction cost comparison. More importantly, he will provide a sneak preview of the fascinating outcomes for labor cost and productivity variations globally.

Murphey Room – Moderator Charles E. Reynolds

⇒ **Emergency Operations** by Bill Tait, ADOT Emergency Manager >> The presentation will provide an overview of ADOT emergency operations and the development of new strategies. It will also touch on threats and the need for security in transportation agencies.

Verbena Room – Moderator Kimberly Carroll

⇒ **ADOT Response to Governor's Order for Bridge Review** by Jean Nehme, PhD., P.E., Arizona State Bridge Engineer, ADOT >> The presentation will summarize the ADOT Bridge Group's response to Governor Napolitano's proactive call for a review of the State's bridges following the collapse of the I-35W Bridge in Minneapolis. It will provide general background in numbers, age and condition of the total inventory of bridges and structures in Arizona; describe the actions taken by dedicated bridge staff in the review of over 800 prioritized bridges in the state inventory; discuss whether the findings of the review match the overall condition as determined in past inspections; and outline actions to be taken that were already underway or were determined as a result of the review.

Finger Rock Room – Moderator John Gleason

⇒ **Joint Project Administration (JPA)** by ADOT's JPA Administrator Mickie Franklin; Lillian Marks, Project Manager; Irene Higgs, Project Manager; Gail Chimel, Contract Management Specialist; Lisa Yahraus, Contract Management Specialist; Cindy Childers, Contract Management Specialist; and Korina Lopez, Contract Management Specialist >> Joint Project Administration (JPA) is primarily a hub to provide for the exchange of funds between the Department and other agencies or organizations or to memorialize in writing any agreement of the parties. Joint Project Agreements and Private Sector Agreements (PSA) are essentially the same and carry the same statutory requirements as an Intergovernmental Agreement (IGA). These may involve different parties outside of ADOT and be for different types of arrangements (e.g. project, private sectors or utilities).

Indigo Room – Moderator Mickie Franklin

⇒ [Mitigation of Earth Fissure Across San Tan Boulevard ...](#) by John Shi, Ph.D., P.E., Materials Engineer and Yugantha Perera, Ph.D., P.E., Pavement Design Engineer – MCDOT >> Maricopa County DOT will present a project that involved repair of an earth fissure crack across a County roadway. The cause of the fissure will be discussed. In this project, the fissure, identified as Y-crack by Arizona Geological Survey (AZGS), reopened catastrophically following a heavy rainstorm in July 2007, forming a wide and deep gully along the north limb of the crack, just south of San Tan Boulevard. Even though the wide gully did not extend across San Tan Boulevard, a ½- to ¾-inch wide crack appeared on the road surface at a location between 194th Street and 195th Street. To protect the road from any further disastrous failure in another heavy rainfall, the County immediately responded to the incident, evaluated the situation, designed a mitigation plan, and implemented a semi-permanent solution. ... [Canal Systems in Areas of Subsidence and Fissuring – MSIDD's](#)

[Experience](#) by Brian M. Betcher, Interim General Manager, Maricopa-Stanfield Irrigation & Drainage District >> The District will discuss the general design concepts and subsequent performance of its canal system that runs through areas of known subsidence with emphasis on main canal crossing of earth fissures. The District's Santa Rosa Canal crosses several fissures in the area where State Routes 347 and 84 intersect, about 20 miles west of the City of Casa Grande. In the spring of 1989 heavy storm runoff contributed to a catastrophic failure of the canal cross-section at one location and less severe damage at two other locations. The District will discuss the repairs made at that time and how they have performed since.

[Cottonwood Room](#) – Moderator Bruce Kay

⇒ [ADOT District Engineer Update](#) – *Continued in the Pavilion Room*

[Friday, March 21, 2008 – 11:00 to Noon](#)

⇒ [Project Reference](#) by Irene Higgs, ADOT Project Manager and Scott Parkey, IT Contact, ADOT >> The Project Reference is an electronic, paperless, document filing system being used on all ADOT highway projects. The system includes approximately 150 documents from all project phases ("cradle to grave"). Creating and contributing to the Project Reference is a collective effort among all disciplines within ADOT and the project stakeholders. The system makes the most current information easily available, increasing efficient use of time, and improving organization and team work within ADOT and its stakeholders. The Project Reference is designed to provide a historical file for an individual project. [Murphy Room](#) – Moderator Vicki Bever

⇒ [Pre-Signals – Safety at Highway/Railroad At-Grade Crossings](#) by Reza Karimvand, ADOT Tucson District Traffic Engineer; Bob Hunt, Traffic Engineering Manager, City of Tucson; Felipe Ladron de Guevara, Transportation Engineer, DMJM Harris >> During the late 1950's in northwest Tucson, I-10 was constructed parallel to the existing Union Pacific Railroad. At the Prince Road/I-10 Traffic Interchange an at-grade highway-railroad crossing is located approximately 50 feet east of I-10. To prevent vehicles from stopping on the tracks, a "Pre-Signal" was installed. The Pima Association of Governments and DMJM Harris conducted a comprehensive evaluation of the pre-signal. The results of this evaluation concluded the pre-signal improved safety by reducing this occurrence and undesirable traffic violations and behaviors. Additionally, a Geographic Information System (GIS) with highway-railroad data was set up for the Metropolitan Area.

[Verbena Room](#) – Moderator Jay Van Echo

⇒ [Balancing Risk and Responsibility in Engineering Services Agreements](#) by William P. Fay, P.E., Public Works Engineer/CIP, City of Chandler and P. Douglas Folk, Attorney, Folk & Associates, P.C. >> Public agencies and their engineering consultants face difficult choices in balancing the amount of risk and responsibility each will assume for project schedule, budget and foreseeable liability exposures. This program presents a detailed discussion of key contract terms – including indemnities, standard of care, warranties, and responsibility for cost escalation or delays – from the perspectives of the agency contracting officer and legal counsel for engineering consultants and their insurers. The speakers will discuss why certain terms are considered "deal-breakers" or uninsurable, and why others may be open for further compromise and negotiation.

[Finger Rock Room](#) – Moderator Rosa Olivas-Naymik

⇒ **Basic Elements of a Successful P3** by Grant R. Holland, VP & Director, Alternative Delivery Systems, Wilbur Smith Associates; Kimberly L. Swain, Director, Public Finance, Citigroup Global Markets; Fred Kessler, Partner, Nossaman Guthner Knox & Elliott >> In the face of current transportation funding gaps public private partnerships, or P3s, have become an increasingly talked about project delivery mechanism. This session is not intended to reiterate the *what* and *why* of the P3 discussion. Instead the panel is comprised of three of the leading US practitioners of P3 who will identify and discuss the issues critical to the success of a P3 project: The concept of feasibility in context of a P3 project; identify a P3's contractual relationships and procurement process; and focus on the various financial tools that are available to P3 projects (the uses of federal financial tools such as credit supports available under the Transportation Infrastructure Finance and Innovation Act and the use of Public Activity Bonds for P3s). The intent of the panel is to provide the audience with a solid understanding of the type of issues that are unique to a P3 process.

Indigo Room – Moderator Dale Miller

⇒ **The Benefits of Thin Asphalt Rubber Friction Courses Overlays of PCCP** by Douglas D. Carlson, Executive Director, Rubber Pavements Association; Kamil Kaloush, ASU; George Way, ADOT (ret.); and Mark Belshe, FNF Construction >> A session discussing the contributions of ARFC overlays to noise reduction, decrease in thermal expansion of the underlying PCCP, reduced tire wear and increased safety through increased visibility, reduced splash and spray, and reduced accidents. A brief discussion on mix design, manufacturing and placement will also be included.

Cottonwood Room – Moderator Bruce Kay

⇒ **ADOT District Engineer Update** – *Continued in the Pavilion Room*

Noon to 1:30 p.m. – Closing Conference Lunch

Arizona Ballroom

Transportation Overview – State & National Perspectives

Senate President Tim Bee, Arizona State Senate
Victor Mendez, Director, Arizona Department of Transportation



Roads & Streets Volunteers

Bob Mickelson, Chairman

Nathan Banks ... Kim Carroll ... Al Field ... Christine Fanchi ... Doug Folk ... John Gleason
John Hauskins ... Natalya Hyland ... Bruce Kay ... Beverly McCormick ... Amanda McGennis
Mike Marietti ... Chris Mexas ... Doug Moseke ... Cyndi Newman ... Rosa Olivas-Naymik
Chuck Reynolds ... Dale Richards ... S. Loretta Roberts ... Lori Sayers ... Tom Schmitt
Matt Tsark ... Stan Turney ... Rob Turton ... Bob Wagner ... Linda Walsh ... Todd Williams

**Although the Roads & Streets program started in 1938, it was set aside because of the war and the start of the interstate program. Dave Hall resurrected the program in 1956 and it has run continuously since then. Dave stepped down as Chairman of the program in 1968. On February 2, 2008, he passed away at the age of 94. We have all benefited from Dave's dedication and interest in Arizona transportation issues.*

EXHIBITORS

3M Traffic Safety Systems (27) – Tim Gibson & Lee Johnson; 1776 East Horseshoe Court, Gilbert, AZ 85296 480/221-5407; E-mail tgibson@mmm.com
Product: Reflective Sign & Pavement Marking Material, Installation Services, Safety Gear

Achen-Gardner Engineering, LLC (Dessert Party Sponsor) – Dan Spitz & Shauna Stacy 550 South 79th Street, Chandler, AZ 85226 480/940-1300; E-mail dspitza@achen.com

Aerotek E&E (69) – Mike Sarnowski & Brian Pinks 4657 E. Cotton Gin Loop, Suite 200, Phoenix, AZ 85040 602/567-1980; E-mail msarnows@aerotek.com
Services: #1 Technical Staffing Agency in US; Provides All Positions in the Civil & Environmental Engineering Sector.

AMEC (65) – Karen Peters, Dana Ekstrom, Dave Peterson & Nick Bokaie; 1405 West Auto Drive, Tempe, AZ 85284; 480/940-2320; E-mail karen.peters@amec.com
Services: Consulting Engineering, Geotechnical, Environmental, Water Resources, Materials Testing

Ames Construction, Inc. (43 & Coffee Break Sponsor) – Steve Schwab, James Bailey, Paul Arnold & Jeff Williamson; 3410 E. University Drive, #380, Phoenix, AZ 85034; 602/431-2111; E-mail sschwab@amesco.com
Services: Highway & Bridge Construction

Archaeological Consulting Services, Ltd. (52) – Keith Scoular & Tracy McCarthey; 424 W. Broadway, Tempe, AZ 85282; 480/894-5477; Email kscoular@acstempe.com
Services: Cultural Resource, Environmental Management, and GIS Services

ADOT Office of Environmental Services (K) – Siobhan Nordhaugen & Bruce Eilerts, 1611 W. Jackson St., EM04, Phoenix, AZ 85007; 602/712-6993; E-mail snordhaugen@azdot.gov. *Services:* Partnering – Arizona's Wildlife Linkages Assessment

Arizona Department of Transportation (78) – James Young, Linda Peterson, Michael Carter & Michelle Fink; 206 South 17th Avenue, Room 192, Phoenix, AZ 85007; 602/712-7120; E-mail lpeterson@azdot.gov. *Services:* Partnering – The Way ADOT Does Business

Ayres Associates (28) – Bob Wagner, Sam Wallace, Jan Zander & Ted Smithwick 1500 North Priest Drive, Suite 107, Tempe, AZ 85281 602/275-2655; E-mail ZanderJ@AyresAssociates.com
Services: General Civil Engineering Consulting

AZ Block 2000 (58) – Kurt Hoel & Jack Ross 9311 North Casa Grande Highway, Tucson, AZ 85743 520/744-3890; E-mail khoel@azblock2000
Product: Allan Block Segmental Retaining Block & AZ Block 2000 Concrete Pavers

AZTEC Engineering (42) – Nancy MacDonell & Mark Gilliland; 4561 East McDowell Road, Phoenix, AZ 85008 602/454-0402; E-mail nmacdonell@aztec.us
Services: Engineering – Transportation, Structures, Utility, Drainage, Environmental, Surveying & SUE

Barrier Systems (N) – Byron West & Lee Stuart 180 River Road, Rio Vista, CA 94571; 707/374-6800 E-mail susan.hartle@barriersystemsinc.com
Product: Barrier Systems

Burgess & Niple, Inc. (15) – Jim Campbell, Jason Pagnard, Ed Muccillo, Bob Conti; 1500 N. Priest Dr., #101, Tempe, AZ 85281; 602/244-8100; E-mail jcampbell@burnip.com
Services: Water, Wastewater, Water Resources & Reuse, Road & Street Design, Improvement Districts

CADsoft Consulting (66 & Continental Breakfast Sponsor) – Weston Jones, Janelle Ramos, Angela Yonkans and Ashley Dalton; 4515 So. McClintock Drive, Suite 220, Tempe, AZ 85282; 480/820-0408; E-mail lisa.duncan@cadsoft-consult.com.
Product: Complete, Comprehensive Autodesk Solutions to Commercial and Government Agencies

Centerline Supply West (24-25) – Mike Murphy & Scott Adams; 1301 East Hadley Street, Phoenix, AZ 85034 602/258-3142; E-mail cswmikem@qwest.net
Product: Traffic & Highway Safety Products

CeraTech Inc. (7) – Don Simmons; 1500 N. Veuregard St., Ste. 370, Alexandria, VA 22311; 443/524-4410; Email pavement@ceratechinc.com
Product: Redefining construction material tech. Mfg of concrete repair, rehabilitation, new construction & precast materials

CH2M HILL (56 & Continental Breakfast Sponsor) – Sharon Wavering & John Holzwarth; 2625 South Plaza Drive, Suite 300, Tempe, AZ 85282; 480/377-6274; E-mail sharon.wavering@ch2m.com
Services: Full-Service Engineering, Construction and Operations

Civiltec Engineering, Inc. (C) – Brenda Devine, Dale Richards & Chris Dusza 20410 North 19th Avenue, Suite 110, Phoenix, AZ 85027 623/582-0970; E-mail brenda@civiltec.com
Services: Civil Engineering Services

CMX (Continental Breakfast Sponsor) – Sherri Koshiol & Bob Draper
7740 N. 16th Street, Suite 100, Phoenix, AZ 85020
602/567-1900; E-mail skoshiol@cmxengineering.com

Coe & Van Loo Consultants, Inc. (76) – Ricardo Aguirre & S. Loretta Roberts; 4550 N. 12th St., Phoenix, AZ 85014
602/264-6831; E-mail slr@cvlci.com *Services:* Civil engr. & land dev., water/wastewater, hydrology, land planning, landscape arch., graphic design & 3danimation, GIS, transportation, construction services, land survey

Con-Arch – A Design Build Product of Hunter Contracting (P) – Jeffrey Dorf, Todd Jackson, Craig Raymond; 6930 N. Camino Martin, Tucson, AZ 85741; 520/744-0722
E-mail info@con-arch.com. *Product:* Design-Build product for the Construction of Strong, Attractive, Reinforced Concrete Arch Bridges, Tunnels & Culverts

Consultant Engineering, Inc. (17) – Steve Bruflat & Sandy Schepis; P. O. Box 37167, Phoenix, AZ 85069
602/866-5090; E-mail sbruflat@cei-az.com
Services: Construction Administration, Right of Way, Permitting & Survey

Contech / Keystone (13) – Brian Roche, John Bacigalupi & Erich Prah; 601 Tijeras Ave. NW, #202, Albuquerque, NM 87102; 505/842-5053; Email broche@keystonewalls.com
Product: The Most Extensive Selection of Bridge, Drainage, Earth Stabilization & Stormwater Solutions (nationwide, single source provider)

Converse Consultants (32 & Nametag Sponsor) – Patricia Krogh, Dean Alford & Merry Ellen Boom
9831 S. 51st St., C-112, Phoenix, AZ 85044; 480/296-0266; Email dalford@converseconsultants.com
Services: Geotechnical Engineering, Environmental & Groundwater Science, Inspection & Testing Services

Cooper Aerial Surveys Co. (1-2) – Gene Brosseau & Emily Awbrey; 11402 N. Cave Creek Rd., Phoenix, AZ 85020
602/678-5111; E-mail gene@cooperaerial.com *Product:* Client-Focused Aerial Mapping Firm Providing Tailored Digital Photogrammetric Mapping & Imagery Services to Quality Engineers, Surveyors, & Geospatial Professionals

Copperstate Pavement Products, LLC (Q) – Danielle Cope-Dismuke; 711 E. Carefree Hwy., Ste. 102
PMB 95, Phoenix, AZ 85085; 623/742-0385
E-mail copperstatepave@aol.com. *Product:* Specialized Asphalt & Concrete Patching Products

Crafco & Ergon (34) – Edward Myers & Dave Troyanek; 420 North Roosevelt Avenue, Chandler, AZ 85226
602/276-0406; E-mail phil.royer@crafco.com
Product: Supplying the Pavement Preservation Industry with Quality Products including Crack Sealant, Equipment & Emulsions

Cutler Repaving Inc. (37) – John Rathbun & Lyle Smith
921 East 27th Street, Lawrence, KS 66046
785/843-1524; E-mail jrathbun@cutlerrepaving.com
Product: Hot In-Place Recycling of Existing Asphalt Pavements

David Evans and Associates Inc. (T) – Chuck Horvath & Robert Dykman; 2141 E. Highland Ave., #200, Phoenix, AZ 85016; 602/678-5151; E-mail caho@deainc.com
Services: Transportation Planning & Design; Traffic Engr.; Commuter Rail Planning & Design; Bridge & Structure Design; Civil Engr.; Surveying/APS; Hydrology & Hydraulics

Dibble Engineering (79) – Stephanie Munoz & Kent Dibble
7500 N. Dreamy Draw Dr., Phoenix, AZ 85020.
602/957-1155; E-mail stephanie.munoz@dibblecorp.com
Services: Civil Engineering, Surveying & Construction Services to Both Public & Private Agencies

DMJM Harris (R) – Jenny Bixby & Steve Fowler
2777 E. Camelback Rd., Ste. 200, Phoenix, AZ 85016
602/337-2777; E-mail jennifer.bixby@dmjmharris.com
Services: Highway/Bridge, Transit/Rail, Planning, Environmental, Construction Mgmt., Design-Construct

Earth Reinforcement Specialists (M) – Chris Blindheim & Tyler Bly; P. O. Box 2899, Peoria, AZ 85380; 623/486-6820; E-mail blindheimsw@qwest.net
Product: Earth Retention & Shoring Contractor

EarthCare Consultants, LLC (D) – Marty Koether & Rose Svedberg; 285 N. Meyer Ave., Suite 1, Tucson, AZ 85701
520/792-4001; E-mail rose@dustdr.com *Product:* Dust Control, Soil Stabilization & Erosion Control

EEC (33) – Stacy Henrich & Christy Sipos
4625 East Fort Lowell Road, Tucson, AZ 85712
520/321-4625; E-mail shenrich@eectuc.com
Services: Civil Engineering & Environmental Services

Entellus, Inc. (J) – Patrice Miller & Leslie Peacock
2255 North 44th Street, Suite 125, Phoenix, AZ 85008
602/244-2566; E-mail pmiller@entellus.com
Services: Civil Engineers, Transportation, Water Resources, Water/Wastewater, Construction Management, Survey, Development Services

EPS Group Inc. (61) – Kate Malloy & Elijah Williams
2150-1 So. Country Club Drive, Suite 22, Mesa, AZ 85210
480/503-2250; E-mail kate.malloy@epsgruoinc.com
Services: Transportation Planning & Design, General Civil,
and Surveying Services

Flint Trading Inc. (16) – Gary DePiero
115 Todd Court, Thomasville, NC 27360
336/475-6600; E-mail sales@flinttrading.com
Product: Preformed Thermoplastic Pavement Markings

Folk & Associates, P.C. (Continental Breakfast Sponsor)
Doug Folk; 3636 North Central, Suite 600, Phoenix, AZ
85012; 602/222-4400; E-mail pdfolk@folklaw.com

Fugro Consultants, Inc. (73 & Portfolio Sponsor) –
Tom Wesling & Jim Hallman; 7031 West Oakland Street,
Chandler, AZ 85226; 480/961-1169; E-mail
jhallman@fugro.com *Services:* Geotechnical Investigation
& Engineering; Construction Materials Testing &
Engineering; Pavement Management; Serial Inspections

**Gannett Fleming, Inc. (67 & Continental Breakfast
Sponsor)** – Carol Hardy & Melissa Serven
4722 North 24th Street, Suite 250, Phoenix, AZ 85016
602/553-8817; E-mail chardy@gfnet.com
Services: Planning/ Engineering, Construction Services,
and Management Consulting

GEC (48) – Loretta Flick & Don Spadola; 2801 S. 35th
Street, Phoenix, AZ 85034; 602/393-4800; E-mail
lflick@gecaz.com *Services:* Geotechnical, Environmental,
Chemical & Construction Materials Testing, Asbestos &
Hazardous Materials Surveys, Phase I & II Site Assess-
ments, Geotechnical Evaluations, Special Inspections

Golder Associates, Inc. (75) – Jenny Bush, Tony Rice, Dale
Armstrong, David Mwewa & Rafae Luna
1430 W. Broadway Rd., Suite 108, Tempe, AZ 85282
480/966-0153; E-mail jrbush@golder.com
Services: Geotechnical Engineering; Hydrogeology &
Environmental Services

Hanson Pipe & Precast, Inc. (26) – Russell Faucett, Al
Heimpel & Arturo Chavarria; 12600 W. Northern Ave.,
El Mirage, AZ 85335; 623/889-3510; E-mail
arturo.chavarria@hanson.com *Product:* Concrete Pipe &
Precast Concrete Products. National Network of Centers
Means Delivery of Products When/Where Needed

Harris & Associates (49) – Mike Errante & Don Dorman
120 Mason Circle, Concord, CA 94520
925/827-4900; E-mail tmjanisch@harris-assoc.com
Services: Program Managers, Construction Managers,
Architects & Engineers Specialize in Planning, Design &
Construction Management for Public/Institutional Clients

Harris Environmental Group, Inc. (40) –
Fred Narcaroti; 58 East 5th Street, Tucson, AZ 85705
520/628-7648; E-mail fnarcaroti@heg-inc.com
Services: Environmental Consulting

Haydon Building Corp. (8) – Melanie McCargar, Jim Pulice,
Jr., Mark Eklund, Mike Perotti, Marty Monsegur & Troy
Gjerde; 4640 E. McDowell Rd., Phoenix, AZ 85008
602/296-1496; E-mail mmccargar@haydonbc.com
Product: Both a Heavy Highway & General Building
Contractor w/ability to Self-Perform Horizontal Const.

HDR, Inc. (50) – Elly Johnson & Melissa Hobbs
3200 E. Camelback Road, Suite 350, Phoenix, AZ 85018
602/522-7700; E-mail flora.mondragon@hdrinc.com
Services: Involved with State, County & Municipal
Planning, Development Design & Construction of
Transportation Facilities in Arizona Since 1959

Huitt-Zollars Inc. (53) – Dave Akers
426 North 44th Street, Suite 300, Phoenix, AZ 85008
602/952-9123; E-mail dakers@huitt-zollars.com
Services: Trans. Engr., Municipal Engr., Hydraulics &
Hydrology, Land Dev. Engr., General Civil & Surveying

International Surfacing Systems (20) – Dick Armstrong &
Jeff Smith; 6751 West Galveston Street, Chandler, AZ
85220; 480/628-5713; E-mail rla40@earthlink.net
Product: Asphalt Rubber Supply & Contracting

Interwest Safety Supply Inc. (82) – Jim Fowers & Chris
Steagall; P. O. Box 25188, Phoenix, AZ 85004
602/253-0683; E-mail jfowers@iwsafety.com
Product: Highway Signs, Impact Attenuators Traffic &
Weather Monitoring Equipment, Traffic Safety Products

J2 Engineering & Environmental Design (51) –
Jeff Holzmeister, Jeff Engelman, Jason Touchin & James
Philbin; 4649 E. Cotton Gin Loop, Suite B-2, Phoenix, AZ
85040; 602/438-2221; E-mail jholzmeister@j2design.us
Service: Civil Engineering & Landscape Architecture

Jacobs Carter & Burgess (31) –
Fred Tallarico, Doug Peters & Carla Silvernale
101 North First Ave., Suite 3100, Phoenix, AZ 85003
602/253-1200; Email fred.tallarico@jacobs.com
Services: Engr. & Environmental Services on Trans.,
Transit, & Other Public Works Study & Design Projects

Kenney Aerial Mapping Inc. (30) – Jonathan Reynolds &
Stan Woessner; 1125 Grand Ave., Bldg. #1, Phoenix, AZ
85007; 602/258-6471; E-mail jonr@kam-az.com
Product: Aerial Mapping Services, Custom Aerial
Photography

Kiewit Western Co. (22) – Yvette Browner & Jody Sims
3888 East Broadway Road, Phoenix, AZ 85054
602/437-7868; E-mail yvette.browner@kiewit.com
Services: Heavy Civil Contractor Delivering Projects From Design-Bid-Build to Design-Build & CM@Risk; Highways, Bridges, Airports, Rail/Transit, Water/Wastewater

Kimley-Horn and Associates, Inc. (47 & Coffee Break Sponsor) – Angela Brekken & Dianne Fitzpatrick; 7878 N. 16th Street, Suite 300, Phoenix, AZ 85020; 602/944-5500; E-mail angela.brekken@kimley-horn.com. *Services:* Planning, Engr. & Environmental Firm Providing Quality Services to Cities, Counties, & Public Agencies Since 1967

Kleinfelder, Inc. (29) – Phil Hutton, Cyndi Newman & Michael Langley; 1335 West Auto Dr., Tempe, AZ 85284
480/763-1200; E-mail cnewman@kleinfelder.com
Services: Engineering Services Including Environmental, Geotechnical, Environmental Planning & Permitting & Construction Inspection & Testing.

Logan Simpson Design Inc. (5) – Wayne Colebank & Diane Simpson-Colebank; 51 W. Third St., Suite 450, Tempe, AZ 85281; 480/967-1343; E-mail tbaker@lsdaz.com
Services: Landscape Arch., Env. Planning, 404 Permitting, Archaeology, Biology, Public Participation, Const. Admin., Community Wildfire Protection Planning, etc.

Metal Foundations (A) – Gary Reinert, Jr. & Don Williams
930 Glenwood Avenue, Ambridge, PA 15003
724/266-8733; E-mail greinertjr@e639.com
Product: Metal Fin Pipe Foundations

Michael Baker Jr., Inc. (63 & Continental Breakfast Sponsor) – Steve Jimenez, Anthony Pisano, Chad Andrews & Laura Poore; 2929 No. Central Avenue Suite 800, Phoenix, AZ 85012; 602/279-1234; E-mail lpoore@mbakercorp.com *Services:* Transportation, Civil, Environmental, Architecture, Geographic Info Tech

Morrison-Maierle, Inc. (F) – Shawna Britt, Joseph Byrne, Jason Mercer & Jim Witkowski; 80 E. Rio Salado Parkway, Suite 201, Tempe, AZ 85281; 480/517-5800; Email sbritt@m-m.net *Services:* Full Service Civil Engr & Survey; Water/ Waste-water; Hydrology/Drainage; Landscape Arch & Planning; Bridge/Road Design/Modeling

Ninyo & Moore (77) – Gary Sheppard & Bruce Kay
3001 South 35th Street, Suite 6, Phoenix, AZ 85044
602/243-1600; E-mail tross@ninyoandmoore.com
Services: Geotechnical, Environmental Engineering Services, Materials Testing Services

Olsson Associates (68) – Linda Walsh & Brett Olson
7250 North 16th Street, Suite 210, Phoenix, AZ 85020
602/748-1000; E-mail lwalsh@oaconsulting.com
Services: Civil Engineering, Landscape Architecture & Surveying

Pacific Advanced Civil Engineering, Inc. (12) – Dennis Richards; 426 N. 44th Street, #120, Phoenix, AZ 85008
602/275-8066; E-mail drichards@pacewater.com
Services: Watershed Mgmt. & Planning; Stormwater Quality; GIS; Flood Control; River Engr.; Bridge Scour Analysis; Water/Wastewater Treatment; Hydraulic Model

Pacific Products and Services (55) – Larry Gill & Rich Torres; P. O. Box 979; Highland, CA 92346
800/320-3230; E-mail larryg@pacific-products.net
Product: Master Distributor for Allied's Telespar Square Perforated Square Sign Posts & Related Products as well as other corresponding Traffic Products

Parsons Transportation (9 & Continental Breakfast Sponsor) – Paul Dickman & Stan Polasik; 4801 East Washington Street, Suite 250, Phoenix, AZ 85034; 602/852-9195; E-mail paul.dickman@parsons.com.
Services: Infrastructure, Transportation, Water, Aviation, Telecommunications, Environmental, Planning

Pavement Marking Inc. (B) – Juan Arvizu & Clinton Dekey
8949 South Beck Avenue, Tempe, AZ 85284
480/598-0872; E-mail ja@pmiaz.com
Product: Roadway Pavement Markings

PBS&J (70 & Program Sponsor) – Jim McCluskie & Jim Martin; 7310 North 16th Street, Suite 310, Phoenix, AZ 85020; 602/943-1003; E-mail clhanson@pbsj.com
Services: Transportation, Environmental, Water Resources, Civil, Construction Admin., Federal Planning, Risk & Emergency Management, Architecture

Pinnacle One (14) – Tom Flaaen & Steve Playford
1620 W. Fountainhead Parkway, #202, Tempe, AZ 85282
480/394-0335; E-mail jholmes@pinnacleone.com
Services: Expert Program/Project & Construction Mgmt. for Horizontal Projects. Office in Valley, Tucson & Yuma

Psomas (64 & Dinner Reception Sponsor) – Antigone Stevens & Sherry Living; 800 East Wetmore Road, Suite 110, Tucson, AZ 85719; 520/292-2300; E-mail astevens@psomas.com *Services:* Specializing in Water, Transportation & Land Development; Focus on Client Long-Term Needs; Multi-Discipline Team of Experts

QuakeWrap, Inc. (60) – Mo Ehsani & Carlos Peña
P. O. Box 64757, Tucson, AZ 85728
520/791-7000; E-mail lori@QuakeWrap.com
Services: Fiber Reinforced Polymer (FRP) System
for Repair & Strengthening of Structures

Quality Testing, LLC (19) – Doug Lattin & Jeff Schaper
P. O. Box 35305, Phoenix, AZ 85069
480/496-2000; E-mail dlattin@qt-az.com
Product: Materials Testing & Inspection

Quantm (0) – Tom Anderson & Adrien Patane
P. O. Box 23761, Pleasant Hill, CA 94523;
925/287-0903; E-mail tomanderson@quantm.net
Product: Quantm is a Route Optimization Technology
Used by Planners to Identify the Best Location for New
Roads & Corridors While Minimizing Construction Cost

RampDome Systems (4) – Naomi Anderson & Frankie
Richards; 15111 N. Hayden Rd., #160-359, Scottsdale, AZ
85260; 602/791-2818; E-mail naomi@rampdome.com
Product: ADA Truncated Dome Manufacturer Providing
the Best Concrete System Available; Durable & Easy to
Install; Cost Savings on R & R

RBF Consulting (35) – Brandi Marinelli & Michael Bruz
16605 North 28th Avenue, Suite 100, Phoenix, AZ 85379
602/467-2200; bmarinelli@rbf.com
Services: Multi-Discipline Planning, Engineering, Survey &
Construction Management

Ritoch-Powell & Assoc. (3) – Rosa Olivas-Naymik & Karl
Obergh; 3800 N. Central Ave., #605, Phoenix, AZ 85012
602/263-1177; E-mail rolivas@ritochpowell.com
Services: Civil Engineering & Surveying Consultants

SAGE Landscape Architecture & Environmental, Inc. (38)
– Anne Hammett & Rebeca Field; 2210 E. Fort Lowell,
#120, Tucson, AZ 85719; 520/740-0950
E-mail ahammett@sagelandscape.com
Services: Landscape Architecture, Environmental
Consulting Services

Sealmaster-Arizona (G) – Dave Musgrove & Wally Madill
2020 W. McDowell Road, Phoenix, AZ 85009;
602/253-4660; E-mail sealmaster-dave@qwest.net
Product: Manufacture of Professional Grade Rubberized
Pavement Sealants

Shephard-Wesnitzer, Inc. (46) –
Marybeth Bunker, Kristen Hayden & Guillermo Cortes
75 Kallof Place, Sedona, AZ 86336
928/282-1061; E-mail mbunker@swiaz.com
Services: Civil Engineering, Structural Engineering,
Surveying & GIS with Five Locations in Northern Arizona

Sky Cast LLC (45) – Jeff Clark & Ron Ragwen
10816 N. 42nd Place, Phoenix, AZ 85028; 602/354-2851
E-mail jclark@skycastinc.com *Product:* Manufactures
Spun, Pre Stressed Concrete Poles in a Variety of Shapes,
Colors & Textures for Commercial Development,
Streetscapes, Landscape Areas & Distribution

Solar Traffic Controls (80) – Joe Wise & Tino Rosas
1930 East Third Street, Suite 21, Tempe, AZ 85281
480/449-0222; E-mail joe.wise@solar-traffic-
controls.com. *Product:* Solar & AC Powered Flashing
Beacon Systems for Schools, Road Hazards; High Water
Warning, Game Crossings, Ped Crossings, & Fire Stations

Southwest Slurry Seal, Inc. (23) – Bill Downing & Brian
Barnum; 22855 North 21st Avenue, Phoenix, AZ 85027
623/582-1919; E-mail bill.swss@earthlink.net
Product: Slurry Seal and Microsealing

Speedie & Associates, Inc. (10) – Don Cornelison & Dan
Dragonetti; 3331 East Wood Street, Phoenix, AZ 85040
602/997-6391; E-mail donnac@speedie.net
Services: Geotechnical, Environmental & Materials
Testing, Consulting Engineering Services

Stanley Consultants (39 & Opening Reception Sponsor)
Michael Hunzinger & Beverly McCormick; 1661 East
Camelback Rd., Suite 400, Phoenix, AZ 85016; 602/ 333-
2200; E-mail mccormickbeverly@stanleygroup.com
Services: A Stanley Group Company Providing Engineering
and Construction Services Worldwide

Stantec Consulting Inc. (81) – Mike Robson & Tom Wolf
8211 South 48th Street, Phoenix, AZ 85044
602/438-2200; E-mail vernon.hebert@stantec.com
Services: Comprehensive Planning & Engineering for
Airport & Aviation, Bridge, Rail, Roadway & Transit
Projects; Integrated Infrastructure/Asset Mgmt.

Sunland Asphalt (E) – Jeff Benedict & Ryan Mackey
3002 S. Priest Dr., Tempe, AZ 85282
602/288-5055; E-mail jeffb@sunlandasphalt.com
Product: Modified Asphalt Paving, Soil Stabilization

Sunrise Engineering, Inc. (21) – Geoff Child & Kim Wilson
2152 South Vineyard, Suite 123, Mesa, AZ 85210
480/768-8600; E-mail bbeaubien@sunrise-eng.com
Services: Multi-Disciplined Engineering Firm Specializing in
Civil, Survey & Construction Management Services

SWCA Environmental Consultants (62) – Ken Houser &
Ralph Ellis; 3033 N. Central Ave., Suite 145, Phoenix, AZ
85012; 602/274-3831; E-mail kkohler@swca.com
Services: Consultation Services Related to the
Management of Both Natural & Cultural Resources in the
Public & Private Sectors

TBE Group, Inc. (44) – David Huscher, Al Field & Dan Pidilla; 2236 West Shangri-La Road, Phoenix, AZ 85029
Phone 602/749-8550; E-mail afield@tbegroup.com
Services: Utility Coordination & Utility Locating

Terracon Consultants, Inc. (36) – Ted Mullikin, Chuck Reynolds & Stan Turney; 4685 S. Ash Ave, Suite H-4, Tempe, AZ 85282; 480/897-8200; E-mail tcmullikin@terracon.com *Services:* Environmental Consulting, Geotechnical Engineering, Construction Materials Testing, & Property Condition Assessments

Tetra Tech, Inc. (H) – John Lynch, Heidi Glosser, Morris Riback & David Servis; 4801 E. Broadway Blvd., Suite 521, Tucson, AZ 85711; 520/623-7980; E-mail john.lynch@tetrattech.com *Services:* Civil Engineering, Surveying, Transportation Engineering, Water Resources, Municipal Construction Observation, Site Development

the CK Group, Inc. (74) – Amara Ibeji, John Morast & Ogbonna Abarikwu; 16448 North 40th Street, Suite A, Phoenix, AZ 85032; 602/482-5884; E-mail mrehan@thecckgroup.com *Services:* Transportation Engineering, Traffic Engineering, & Technical Services

Tierra Right of Way Services (6) –
1575 East River Road, Suite 201, Tucson, AZ 85718
520/319-2106; E-mail rkferrick@tierra-row.com
Product: Land Services & Project Management Software

Traffic Control Service / Allied Trench Shoring (71-72) –
Jason Uhrinyak, Pat Riley, Paul Norman & Josh Thompson
3520 East Illini Street, Phoenix, AZ 85040
Phone 602/426-1888; E-mail juhrinyak@tcsi.biz
Product: Rental & Sales of Traffic Safety /
Underground Trench Protection Equipment

TranSystems Corporation (59 & Coffee Break Sponsor) –
Jim Schumann & Tiffany Sikora
300 West Paseo Redondo, Tucson, AZ 85701
520/792-2200; E-mail kmfeeny@transystems.com
Services: Delivering the Total Transportation Experience

Trinity Highway Products (L) – Chuck Norton & Ralph Evans; P. O. Box 99, Centerville, Utah 84014
801/292-4461; E-mail ralph.evans@trin.net
Product: Highway Products, End Terminals, Crash Cushions, Guard Rail, Bridge Rail

Tristar Engineering & Management, Inc. (18) – John Akin & Vaughn Bennett; P. O. Box 35278, Phoenix, AZ 85069;
602/288-5594; E-mail jakin@tristar-az.com
Services: Construction Administration & Design

URS Corporation (57 & Continental Breakfast Sponsor) –
Caraly Foreman & Dave French; 7720 North 16th Street,
Suite 100, Phoenix, AZ 85020; 602/371-1100
E-mail caraly_foreman@urscorp.com *Services:* A/E/C
Planning, Design, PGM Mgmt/Construction Adm/Mgmt
Services for AZ Roadway & Framework Projects

Western Emulsions Inc. (S) – Dave Schenker & Juan Miranda; 3450 E. 36th Street, Tucson, AZ 85713
520/622-7203; E-mail dave@westernemulsions.com
Product: Pavement Preservation

Western Technologies Inc. (54) – Matt Sage & Mark Hahle;
3480 South Dodge Boulevard, Tucson, AZ 85713
520/748-2262; E-mail m.sage@wt-us.com
Services: Geotechnical & Environmental Engineering,
Construction Materials Testing & Special Inspections,
Nondestructive Testing Consultants

Wheat Scharf Associates (Coffee Break Sponsor) –
442 North 6th Avenue, Tucson, AZ 85705
520/884-7911; E-mail lauram@wheatscharf.com

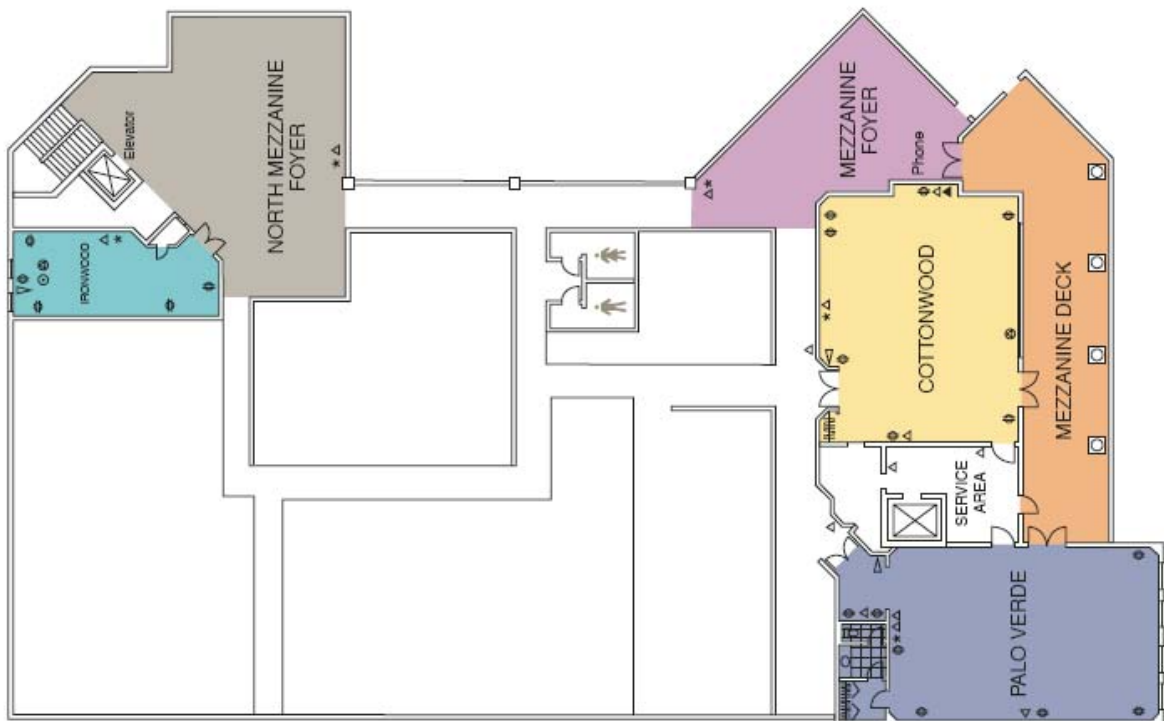
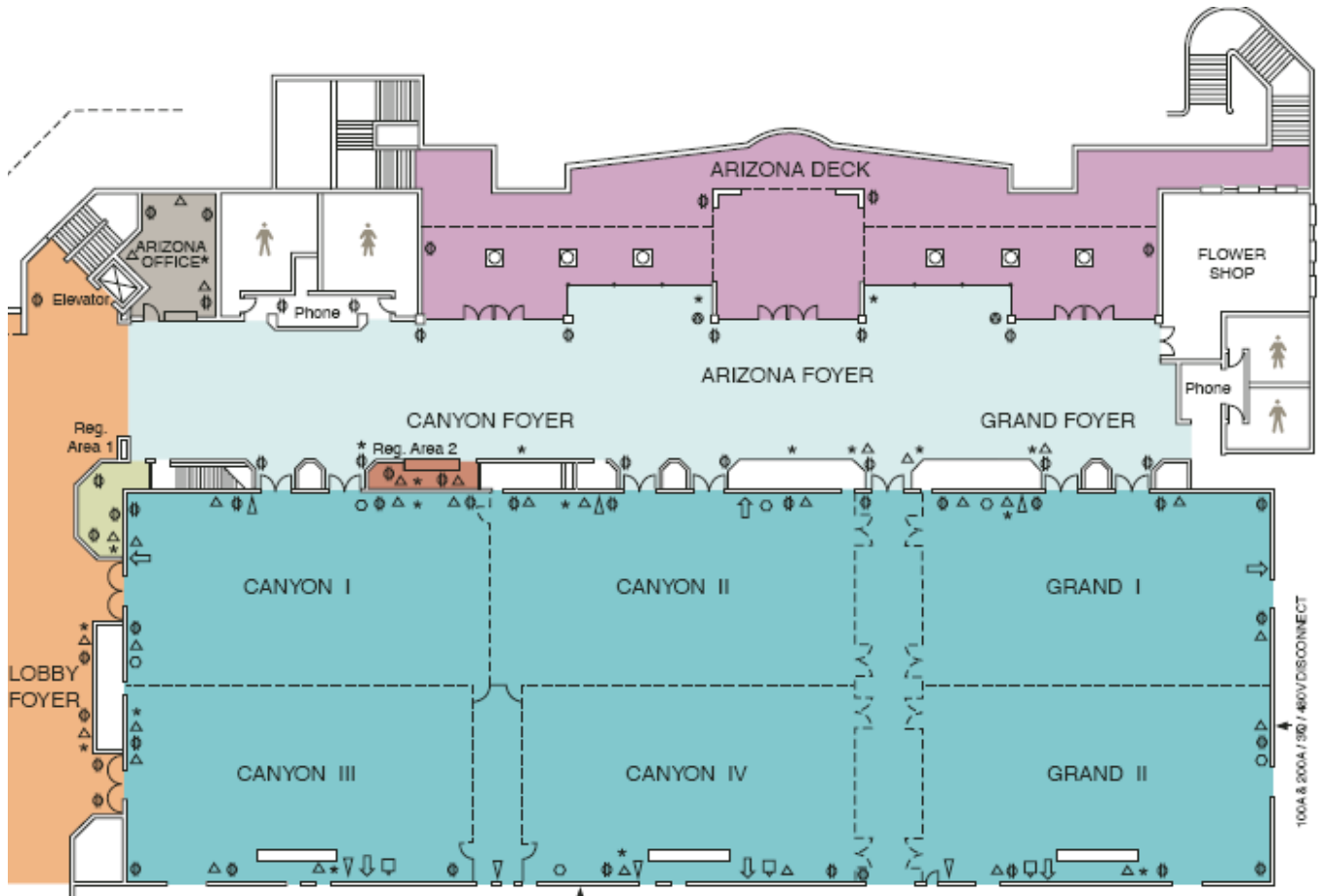
Willdan (11) – Susanna Struble, Grant Anderson, Jim Paustian, Bob Johnson & Dave Gue; 7500 North Dreamy Draw, Suite 130, Phoenix, AZ 85020; 602/870-7600
E-mail cmurillo@willdan.com *Services:* Design &
Construction Mgmt., Municipal Engr., Building Safety,
Traffic & Transportation, Water, Sewer, CM, etc.

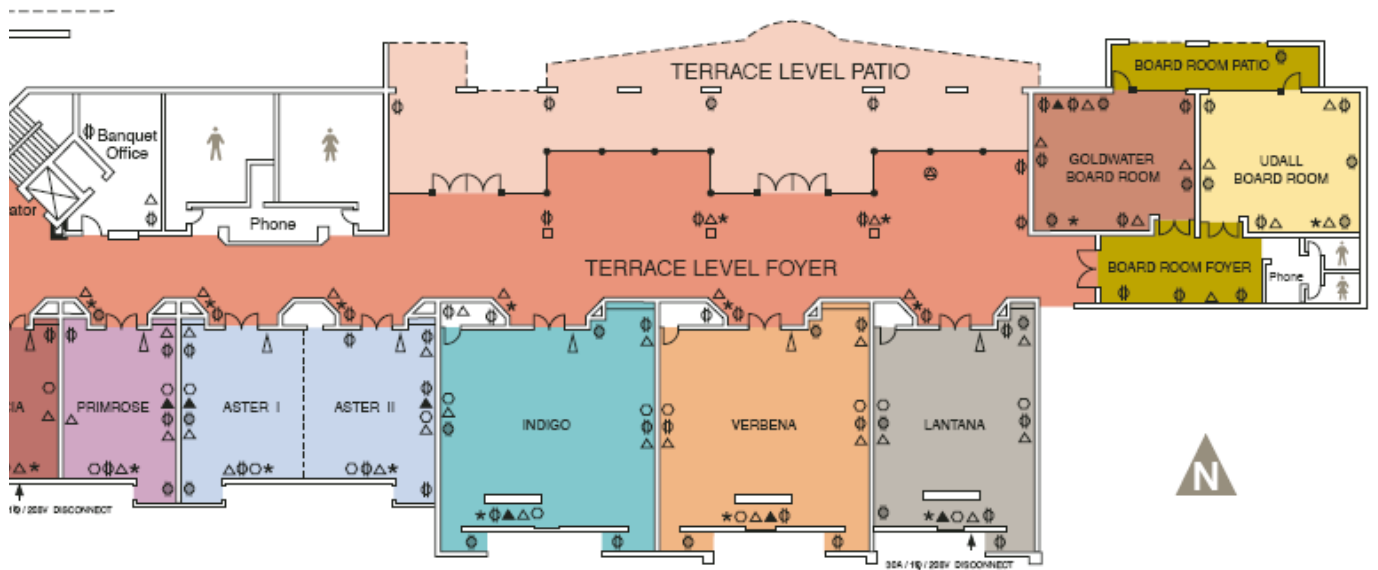
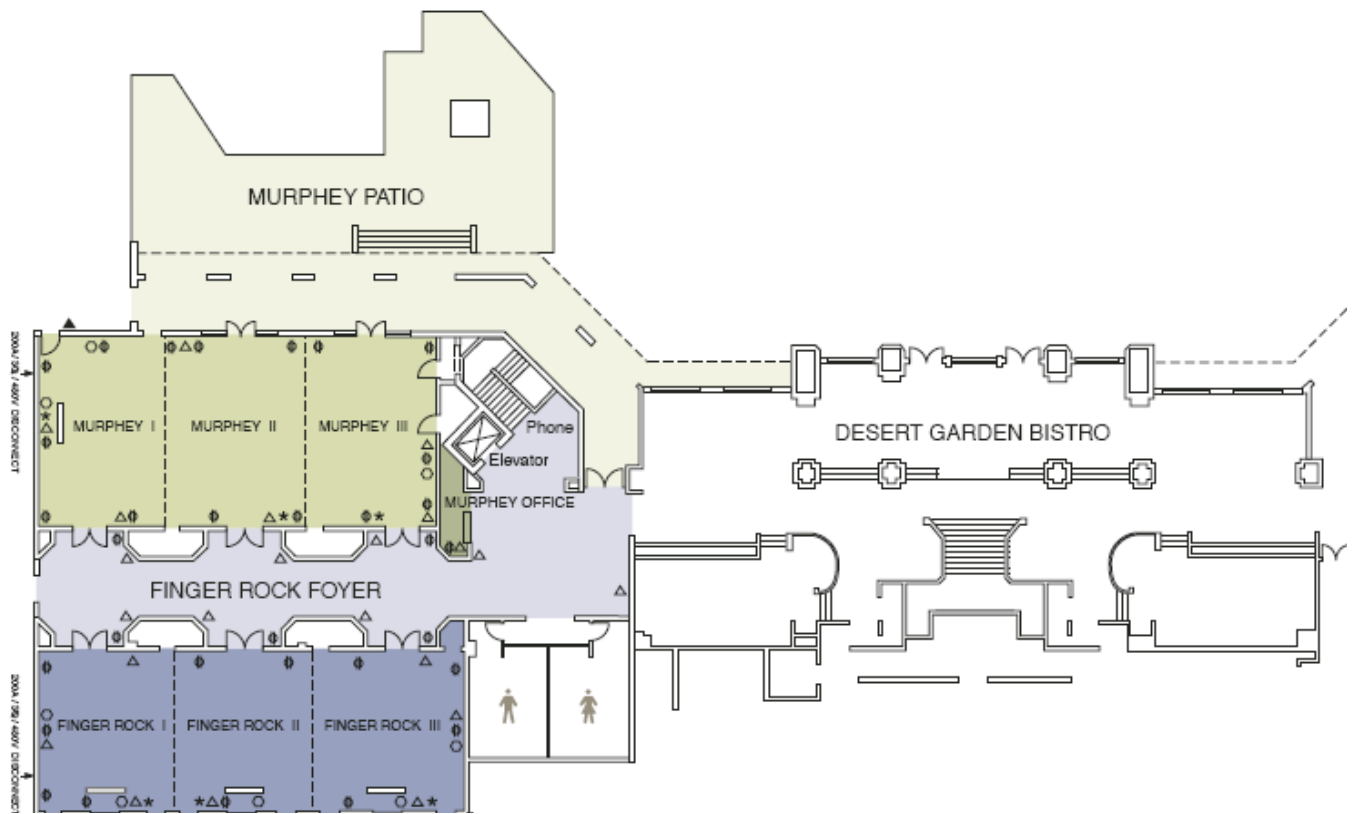
Wilson & Company, Inc., Engineers & Architects (I) –
Jackie Ortiz & Carmelo Acevedo;
410 N. 44th Street, Suite 460 Phoenix, AZ 85008;
602/283-2701; E-mail jackie.ortiz@wilsonco.com
Services: Transportation Planning/Engineering/Design,
Survey/Mapping, Real Estate Svcs, Transit Planning

Zumar (41) – Kevin DeRuiter & Kurt Brei
1917 E. University Drive, Phoenix, AZ 85034
602/252-7446; E-mail Kevin@zumar.com
Product: Traffic Signs & Traffic Related Products,
such as Posts, Hardware & Guardrail

Special "Thank You" to Creative Memories Consultant –
Gladys Marietti – 623/587-8321
E-mail Merryeddie@msm.com
Website www.mycmsite.com/gladysmarietti

LA PALOMA MEETING ROOM MAP





Important: Retain This Program For Your Files

Professional Development Hours Awarded To: *(Your Name)* _____

Checked are the sessions you attended at the
57th Annual Arizona Conference on Roads & Streets
March 19, 20, and 21, 2008 – Westin La Paloma Resort, Tucson, AZ

The following list of Professional Development Hours (PDH) follows the exact listing of sessions in this program.

2 PDH __ Wednesday Opening Session

Thursday Sessions

1 PDH __ Growth/Dev. in So. AZ.

1 PDH __ Pavement Design Practices

1 PDH __ SBE Program

1 PDH __ BMP/Wildlife Connectivity

1 PDH __ RR Permitting

3 PDH __ County Engineers Update

1 PDH __ Mobility Reconnaissance

1 PDH __ Laser Tech/Photogrammetric

1 PDH __ Public Involvement

1 PDH __ Winter Storm Mgmt.

1 PDH __ Governmental Permitting

1 PDH __ Economic Forecast

1 PDH __ AASHTO's LRFD Design/Con.

1 PDH __ Ellsworth Rd. Improvement Dist.

1 PDH __ Environmental Challenges

1 PDH __ Gov. Projects/Utility Perspective

1 PDH __ Statewide Growth Panel

1 PDH __ Rescue Engineering

1 PDH __ Hassayampa River Bridge

1 PDH __ Phoenix M/W/SBE Program

1 PDH __ ACC Requirements for Rail/Hwy

1 PDH __ Fugitive Dust Control

1 PDH __ Digital Photo World/Pt. 1

1 PDH __ Digital Photo World/Pt. 2

1 PDH __ Context Sensitive Solutions

1 PDH __ Traffic Operations

1 PDH __ Accelerated Bridge Construction

1 PDH __ Work Zone Safety

1 PDH __ Working Safely Near Light Rail

1 PDH __ Modern Roundabouts

1 PDH __ Recycling with RAP

1 PDH __ Dam & Roads

1 PDH __ Grand Canyon Skywalk

1 PDH __ Transportation Corridor Analysis

1 PDH __ Road Safety Assessments

1 PDH __ Improving Today/Planning Tomorrow

1 PDH __ Construction Cost Estimates

Friday Sessions

1 PDH __ US-60/Add Lanes

1 PDH __ I-10 Bypass Study

1 PDH __ I-35W Bridge Collapse

1 PDH __ Airport Automated Train

1 PDH __ Roadway Improvement Project

3 PDH __ ADOT District Update

1 PDH __ Int'l Perspective on Cost/Labor

1 PDH __ Emergency Operations

1 PDH __ ADOT Bridge Review

1 PDH __ Joint Project Administration

1 PDH __ Earth Fissure Mitigation

1 PDH __ Project Reference

1 PDH __ Pre-Signals at Hwy/Railroad

1 PDH __ Balancing Risk/Responsibility

1 PDH __ Elements of P3

1 PDH __ Benefits of Thin Asphalt

1 PDH __ Transportation Overview

Your Total Professional Development Hours = _____

Roads & Streets Conference
% American Council of Engineering Companies of Arizona
1309 East Echo Lane, Phoenix, AZ 85020

Phone 602/995-2187 or 1-800/982-5986
Fax 602/995-2218
E-mail execdirector@acecaz.org
Website <http://www.acecaz.org>