

ACEC/ADOT Liaison Luncheon



September 7, 2011

ACEC/ADOT Liaison Luncheon

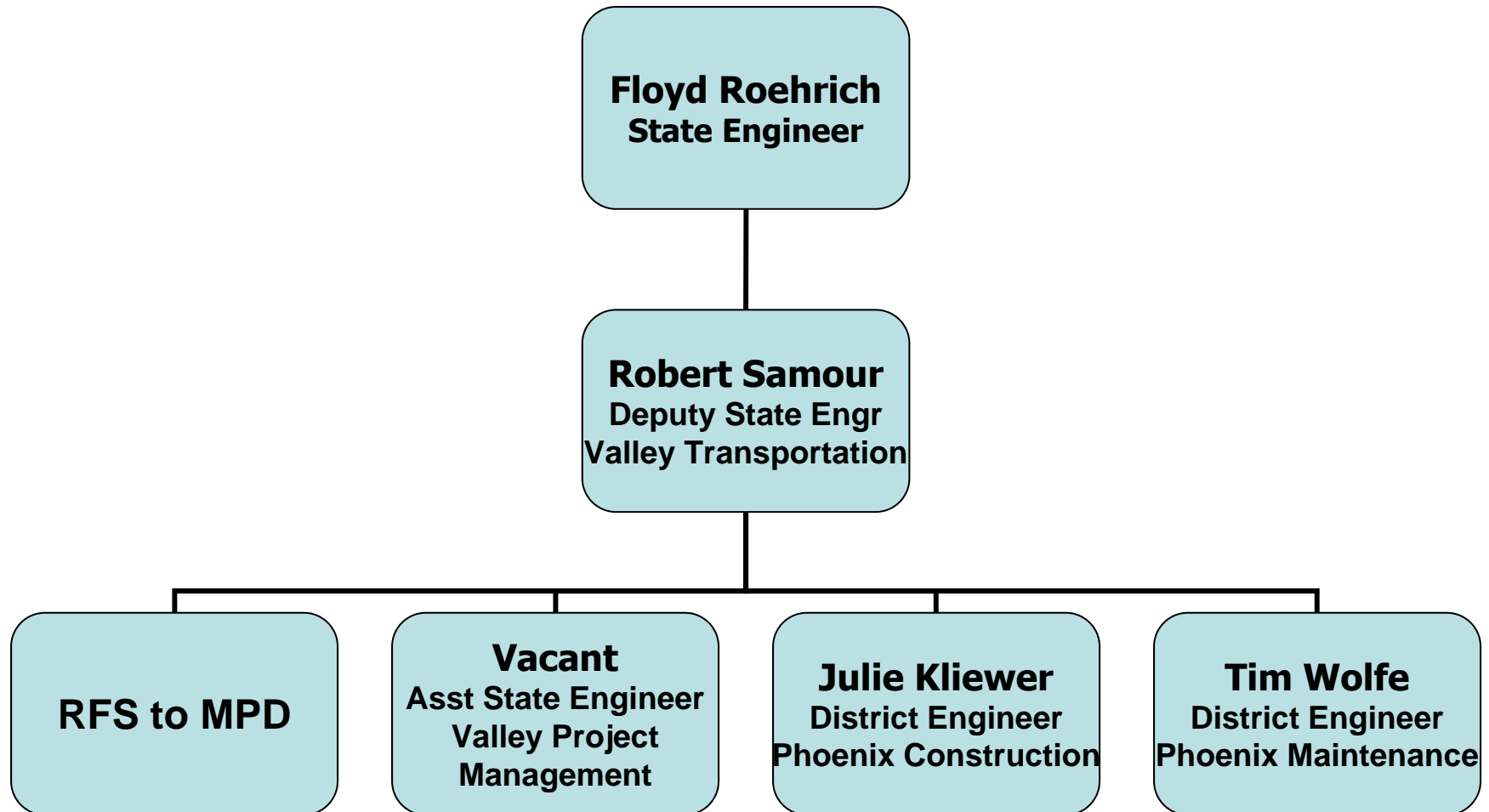


Robert Samour
ADOT Deputy State Engineer
Valley Transportation

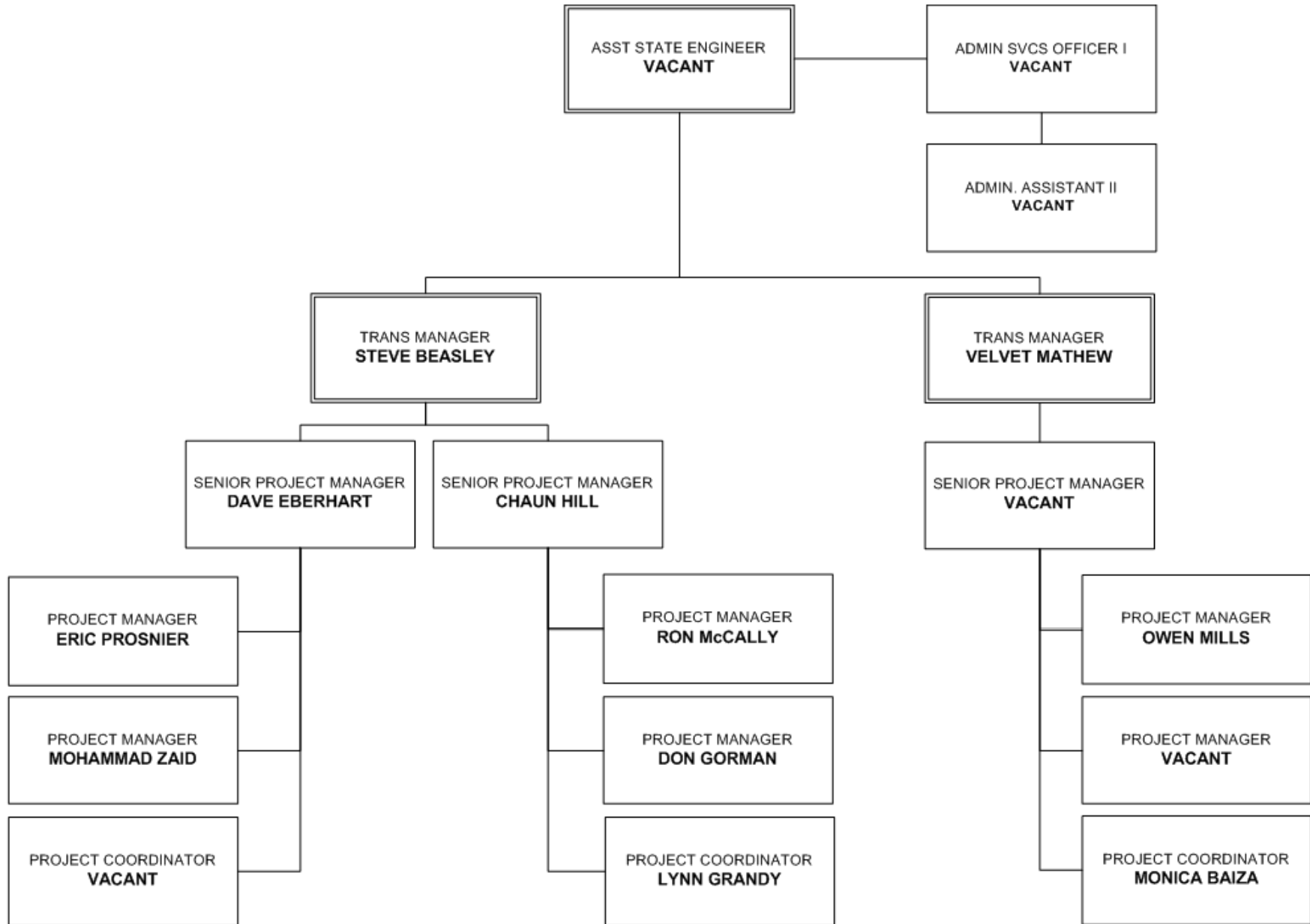
September 7, 2011



Valley Transportation Group



Valley Project Management



MAG RTP Freeway Program

Regional Transportation Plan Freeway Program



ARRA PROJECTS - \$130M
IN PROGRESS COMPLETE

I-17: SR 74-Anthem Way

SR74: MP13-15 & 20-24

**L101: Union Hills-
Beardsley TI**

L101: 51st-35th Ave

**SR87: Four Peaks-
Dos S Ranch Rd**

US60: L303-99th Ave

US60: 99th-83rd Ave

L101: Northern-Grand

L101: Olive Ave TI

I-17: I-10 to Indian School, SB

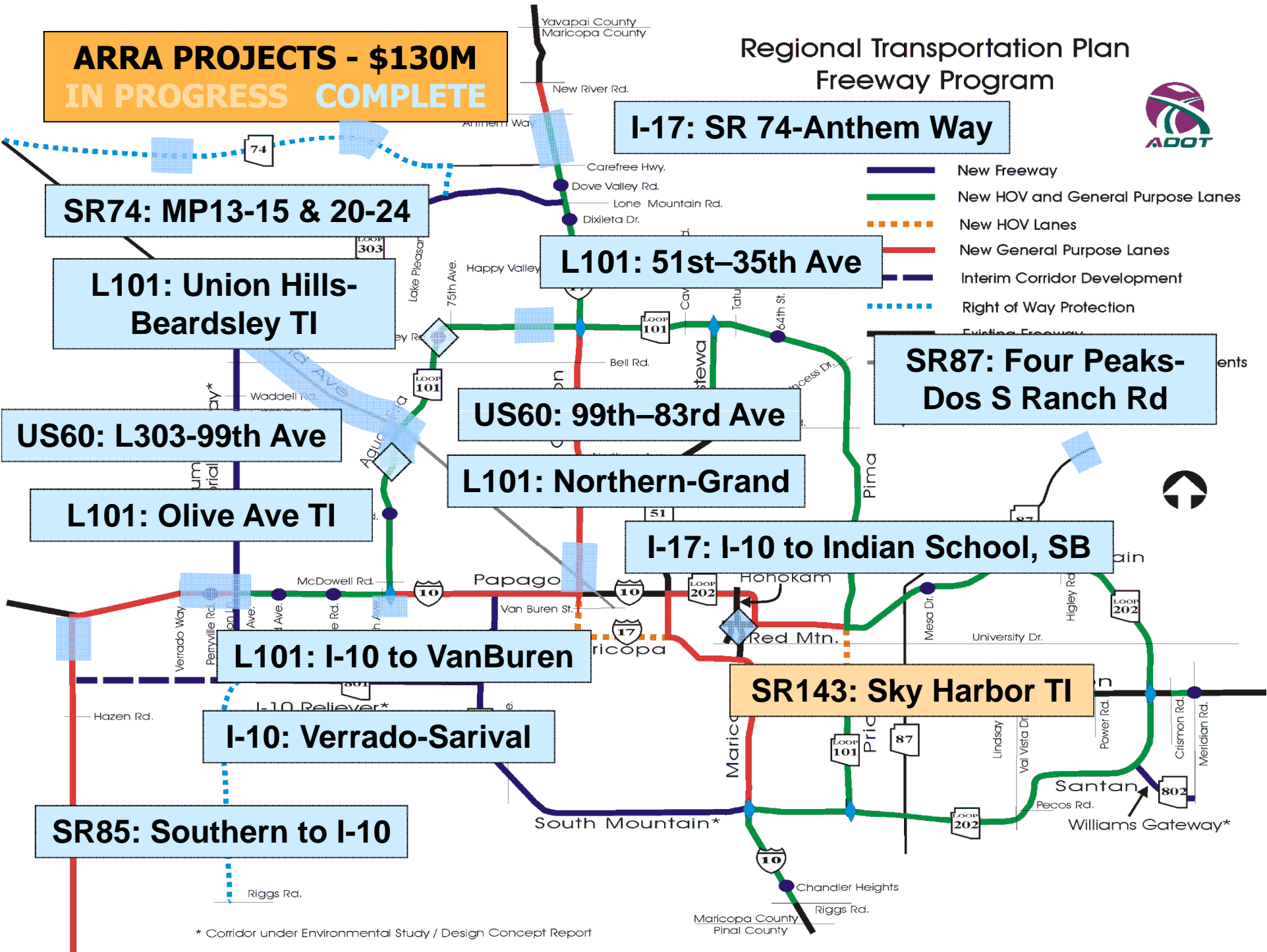
L101: I-10 to VanBuren

SR143: Sky Harbor TI

I-10: Verrado-Sarival

SR85: Southern to I-10

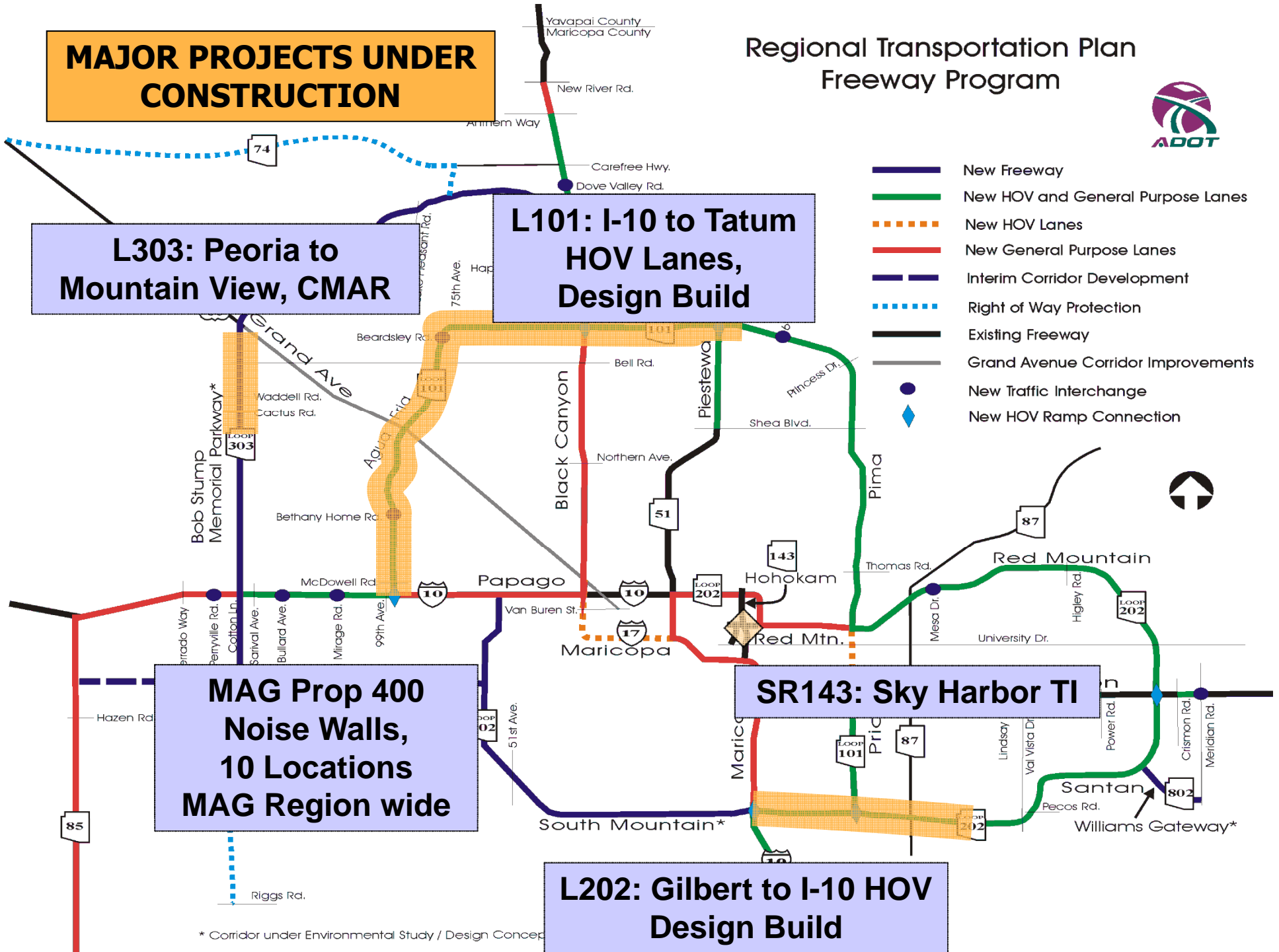
- New Freeway
- New HOV and General Purpose Lanes
- - - New HOV Lanes
- New General Purpose Lanes
- - - Interim Corridor Development
- - - Right of Way Protection
- Existing Freeway



* Corridor under Environmental Study / Design Concept Report

MAJOR PROJECTS UNDER CONSTRUCTION

Regional Transportation Plan Freeway Program



FY 2012 CONSTRUCTION PROGRAM

Regional Transportation Plan Freeway Program



- New Freeway
- New HOV and General Purpose Lanes
- - - New HOV Lanes
- New General Purpose Lanes
- - - Interim Corridor Development

L303: Peoria to Mountain View, Landscaping, \$7M

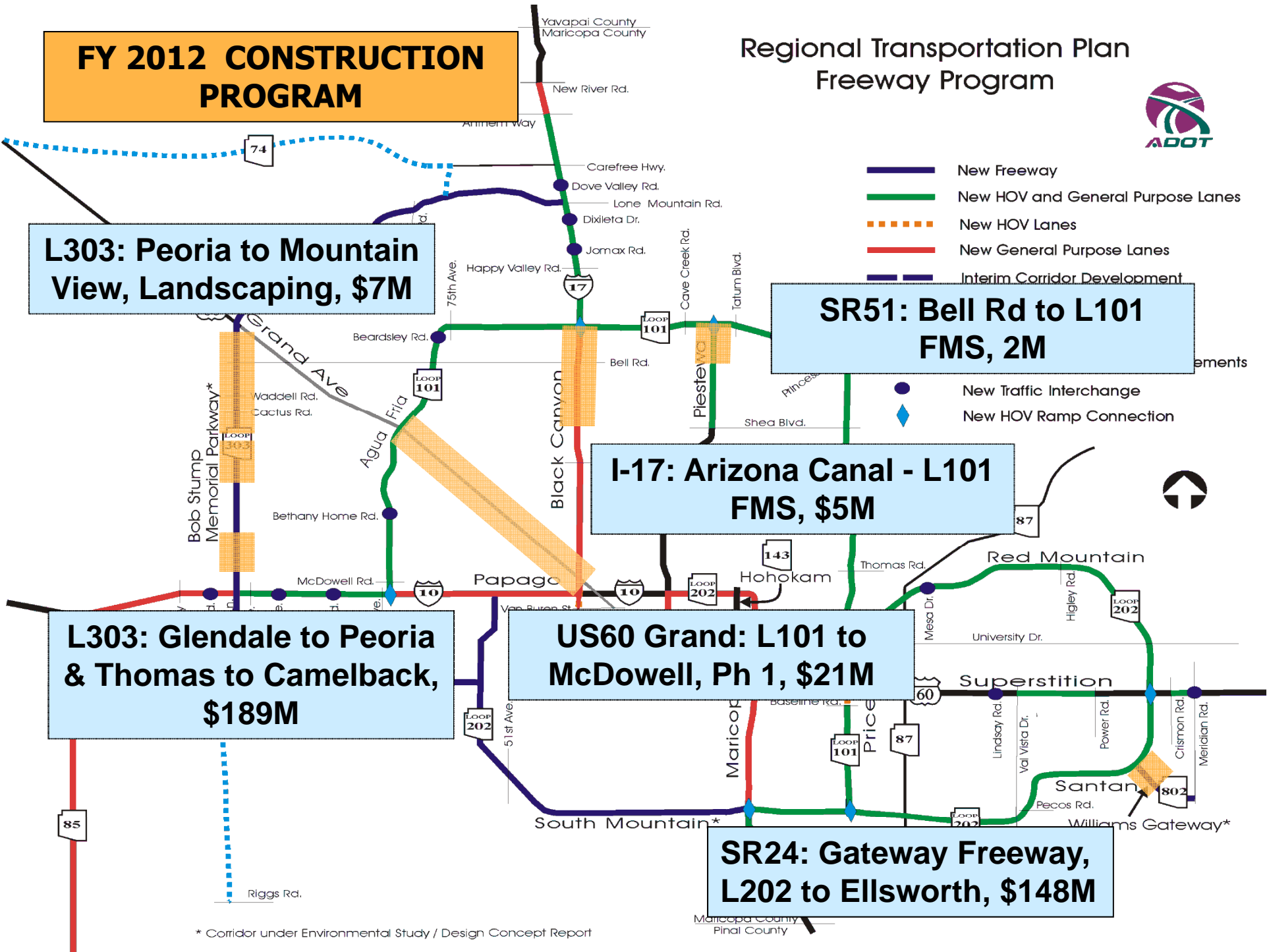
SR51: Bell Rd to L101 FMS, 2M

I-17: Arizona Canal - L101 FMS, \$5M

L303: Glendale to Peoria & Thomas to Camelback, \$189M

US60 Grand: L101 to McDowell, Ph 1, \$21M

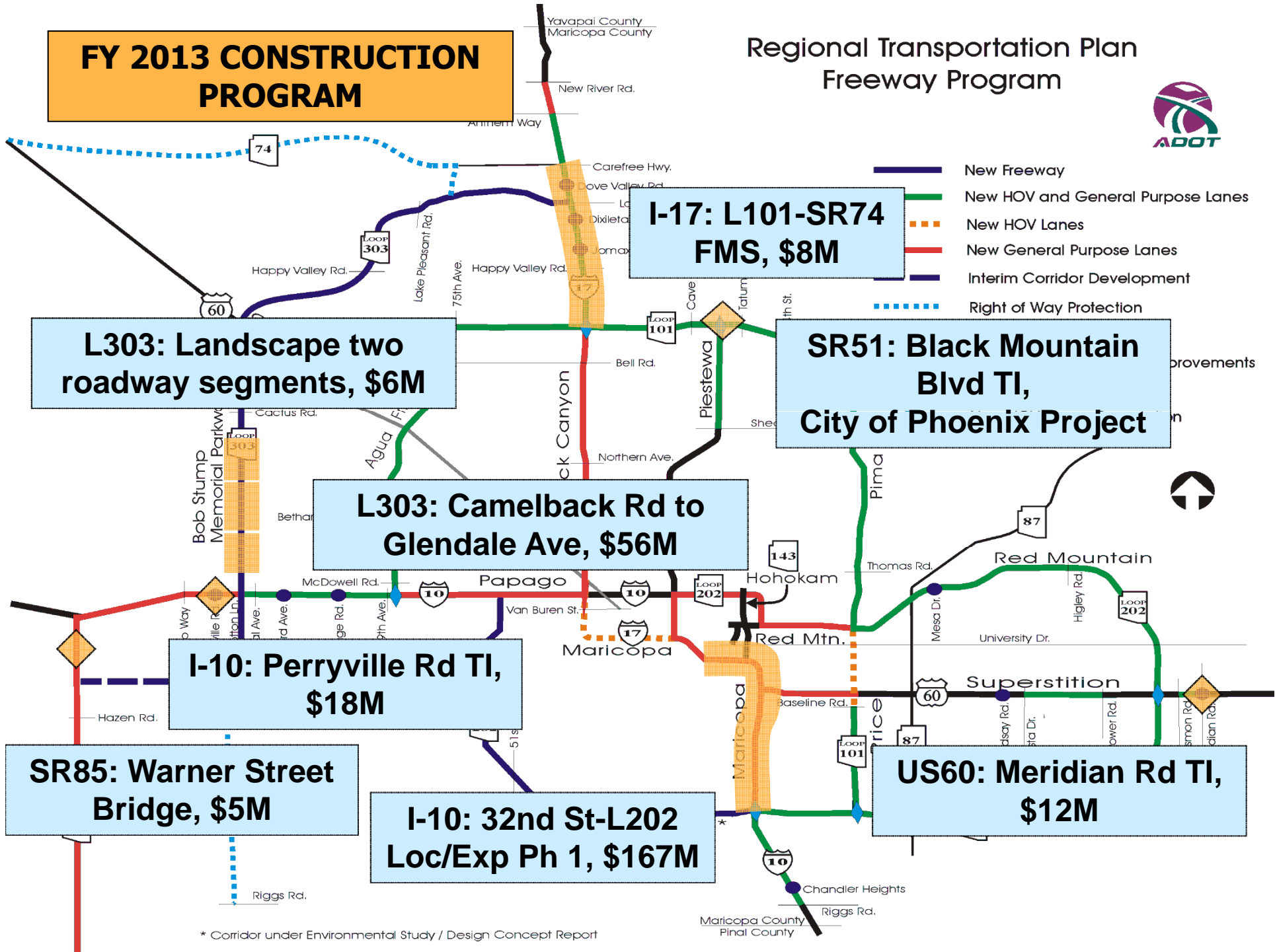
SR24: Gateway Freeway, L202 to Ellsworth, \$148M



* Corridor under Environmental Study / Design Concept Report

FY 2013 CONSTRUCTION PROGRAM

Regional Transportation Plan Freeway Program



* Corridor under Environmental Study / Design Concept Report

FY 2015 CONSTRUCTION PROGRAM

Regional Transportation Plan Freeway Program



- New Freeway
- New HOV and General Purpose Lanes
- - - New HOV Lanes
- New General Purpose Lanes
- - - Interim Corridor Development
- - - Right of Way Protection
- Existing Freeway
- Grand Avenue Corridor Improvements
- New Traffic Interchange
- ◆ New HOV Ramp Connection

***I-17, Arizona Canal – L101, GPL, \$86M**
***I-17, Peoria – Greenway, Drainage Imp, \$17M**

I-10: Sky Harbor West TI, \$37M

L202: L101-Gilbert Rd GPL, \$56M

L202: Baseline to Salt Riv. to Buckeye Rd, \$223M

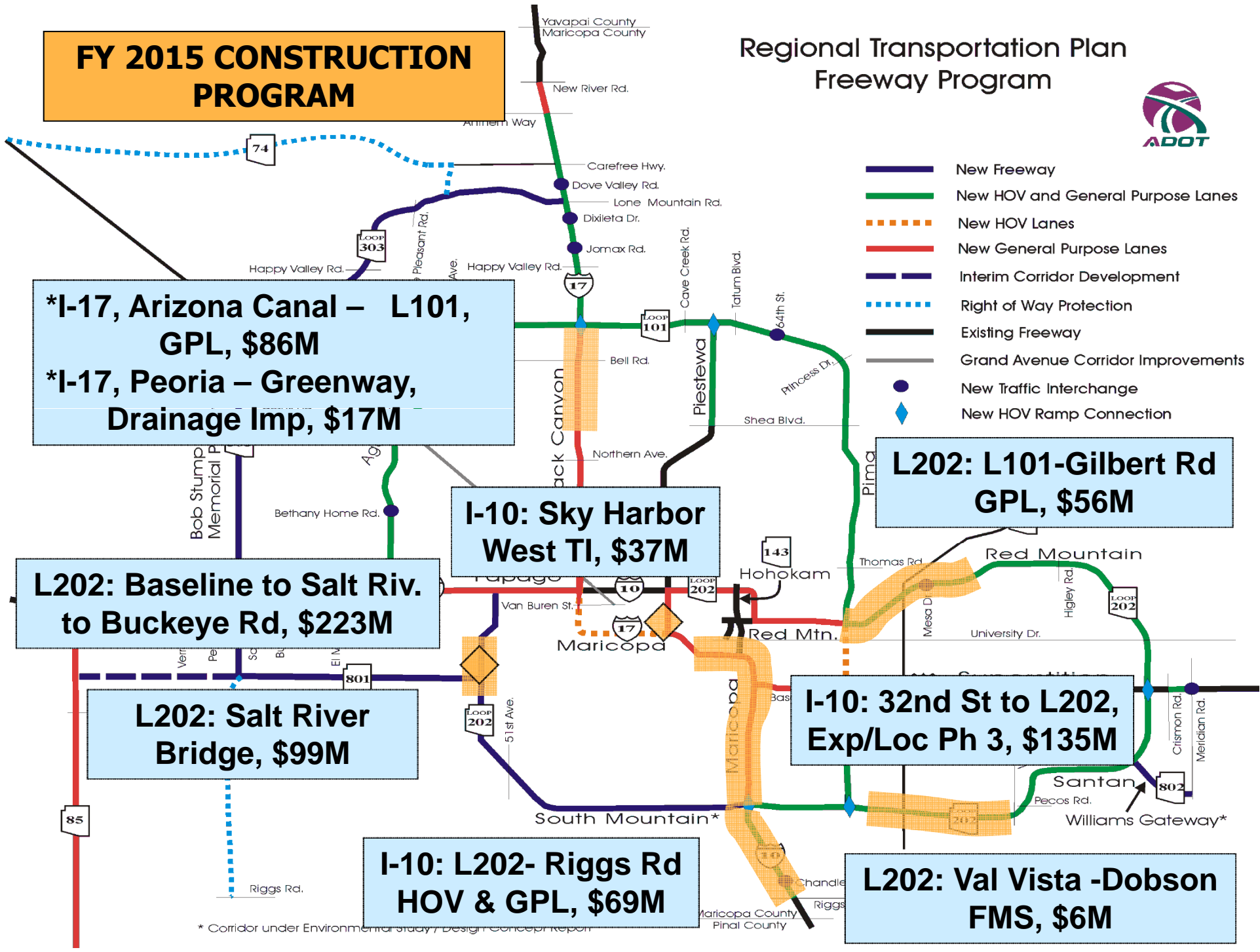
L202: Salt River Bridge, \$99M

I-10: 32nd St to L202, Exp/Loc Ph 3, \$135M

I-10: L202- Riggs Rd HOV & GPL, \$69M

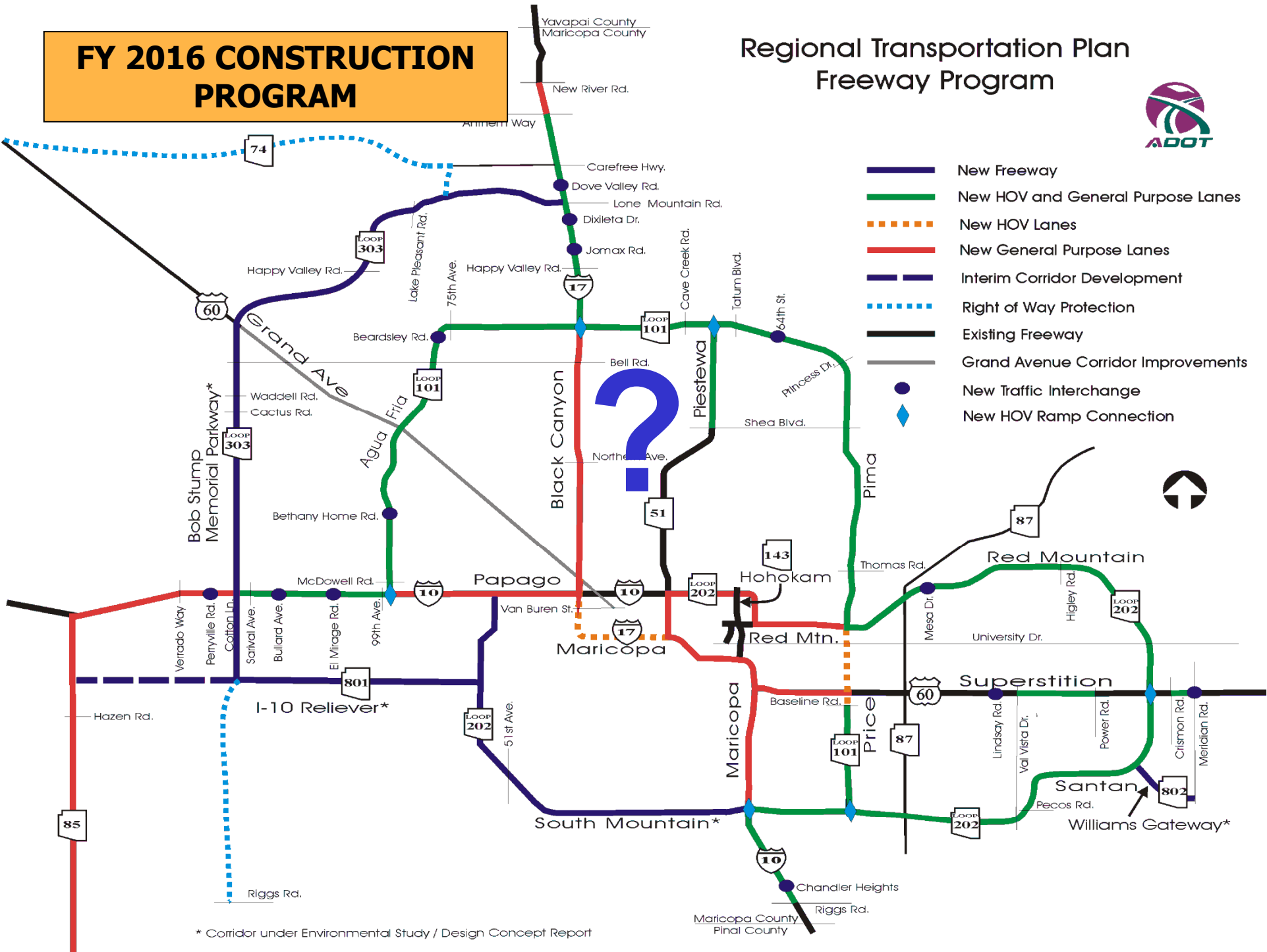
L202: Val Vista -Dobson FMS, \$6M

* Corridor under Environmental study / Design Concept Report



FY 2016 CONSTRUCTION PROGRAM

Regional Transportation Plan Freeway Program



- New Freeway
- New HOV and General Purpose Lanes
- - - New HOV Lanes
- New General Purpose Lanes
- - - Interim Corridor Development
- · · · · Right of Way Protection
- Existing Freeway
- Grand Avenue Corridor Improvements
- New Traffic Interchange
- ◆ New HOV Ramp Connection

* Corridor under Environmental Study / Design Concept Report

Maricopa County
Pinal County

Upcoming Alternative Delivery Projects



- I-10: Perryville Rd TI, **Design Build**
- US60 Grand Ave/SR303L TI, Interim, **CMAR**

MAG RTP Freeway Program

Currently Advertised Design Projects



- SR303L: Peoria to Waddell & Waddell to Mountain View, [Landscape](#)
- Black Mountain Boulevard: SR51 to Cave Creek Road

MAG RTP Freeway Program

FY 2012 Design Projects



- I-10: Perryville Road TI, Design-Build
- US60 Superstition: Meridian Road TI
- SR101L Pima: Shea Blvd to SR202L, GPL
- SR303L: US60 Grand Ave TI, CMAR
- SR303L: Thomas to Camelback & Glendale to Peoria, [Landscape](#)
- MAG Region wide: Four Drainage Tunnels, [Drainage Tunnel Improvements](#)

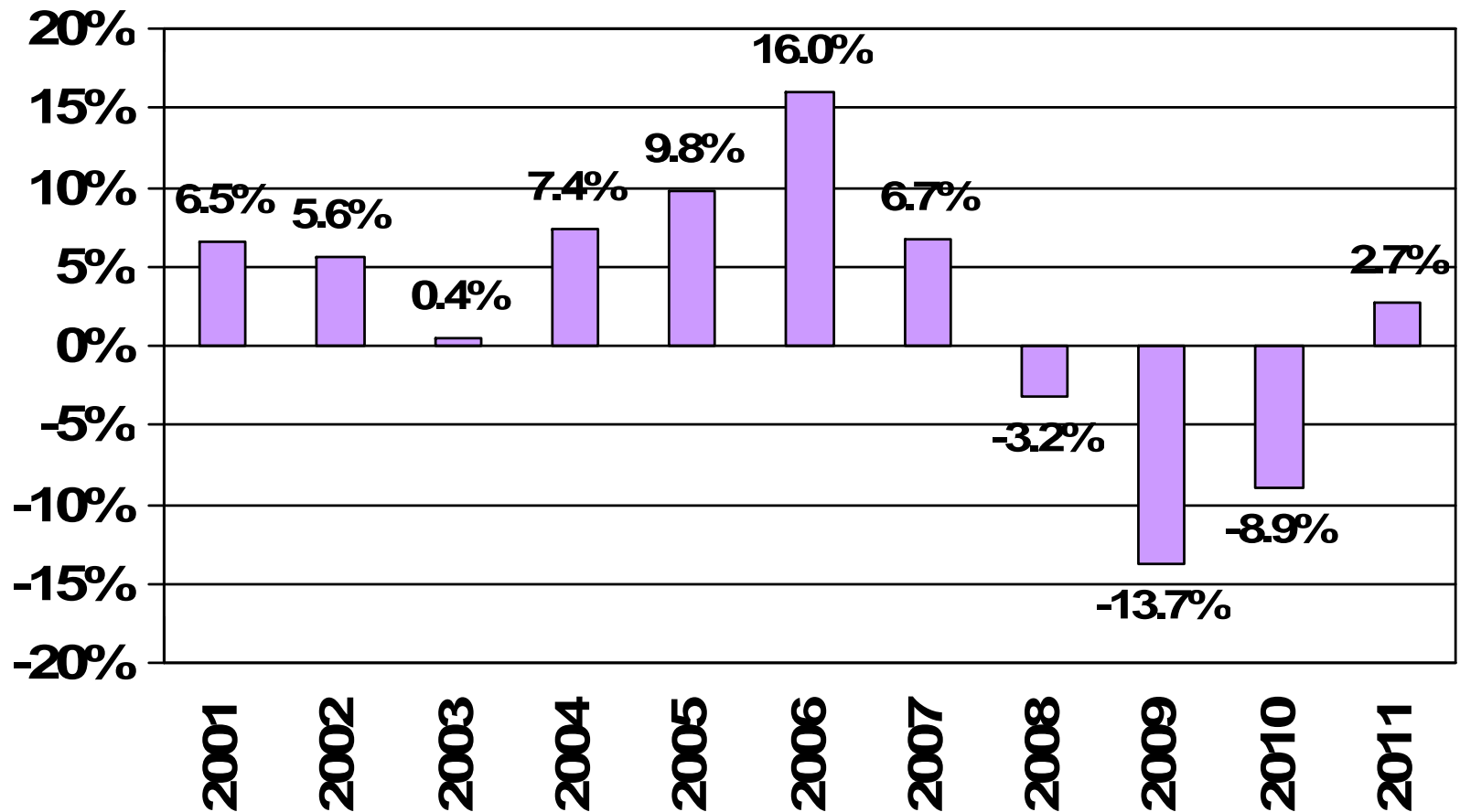
ADOT Highway Program • \$5.4B

FISCAL YEAR	2012	2013	2014	2015	2016
Statewide Highways	\$ 320	\$257	\$ 140	\$ 123	\$ 208
Statewide Subprograms	\$ 218	\$ 230	\$ 347	\$ 313	\$ 413
Subtotal	\$ 538	\$ 487	\$ 487	\$ 436	\$ 621
MAG Area Highways	\$ 607	\$ 465	\$ 862	\$ 731	\$ 0
MAG Area Regionwide	\$ 44	\$ 38	\$ 37	\$ 38	\$ 0
Subtotal	\$ 651	\$ 503	\$ 899	\$ 769	\$ 0
ADOT Program Total	\$1,189	\$990	\$1,386	\$1,205	\$ 621

All costs shown in millions

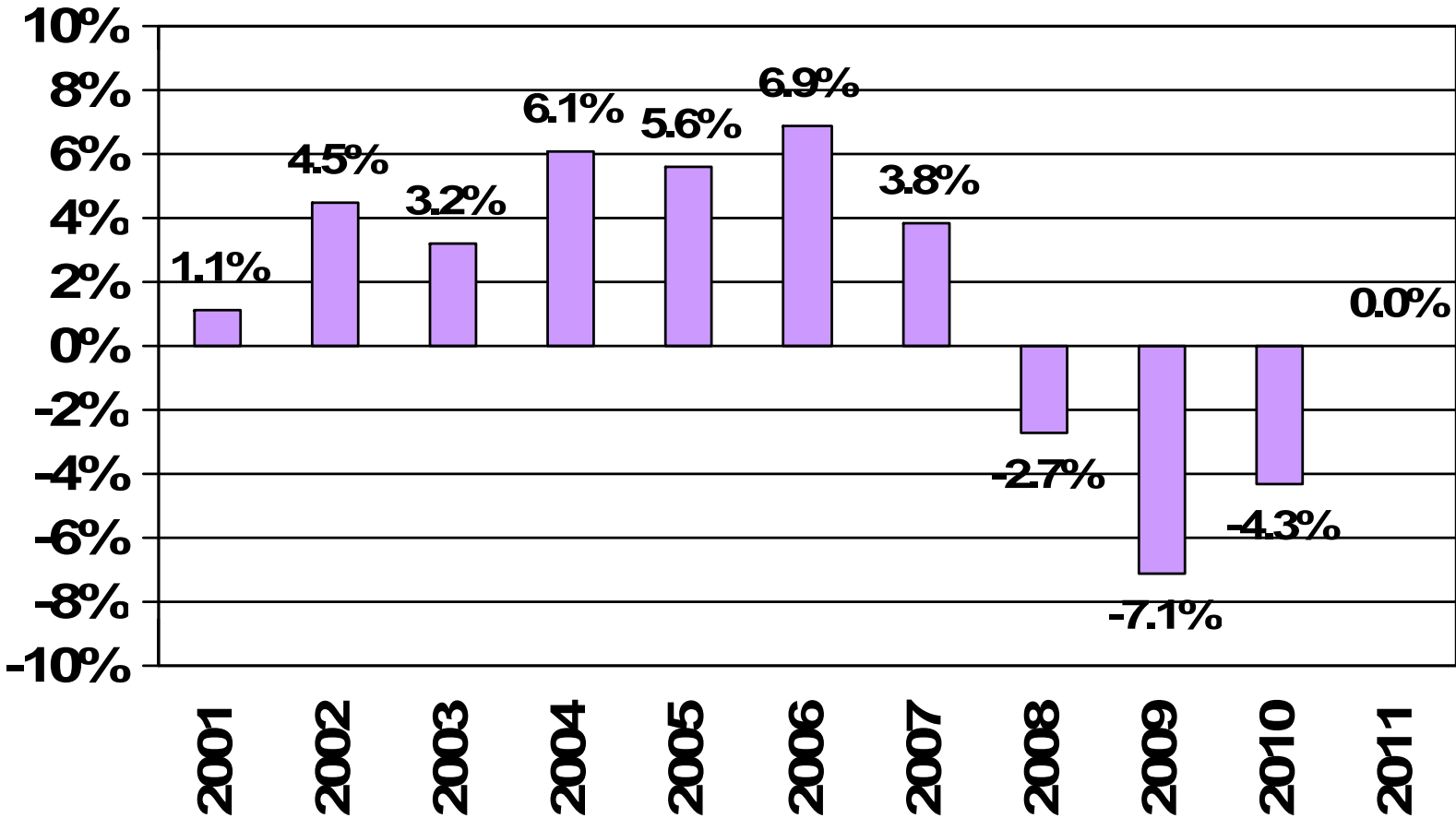
REVENUES

Regional Area Road Fund Revenue Trend by Fiscal Year



Highway User Revenue Fund

Revenue Trend by Fiscal Year



Regional Area Road Fund

Revenue Collections

(Dollars in Thousands)

- FY 2005: \$316,806
- FY 2006: \$367,637
- FY 2007: \$392,452
- FY 2008: \$380,066
- FY 2009: \$328,186
- FY 2010: \$299,024
- FY 2011: \$309,234

Highway User Revenue Fund

Revenue Collections

(Dollars in Thousands)

- FY 2005: \$1,245,553
- FY 2006: \$1,331,625
- FY 2007: \$1,382,474
- FY 2008: \$1,344,477
- FY 2009: \$1,248,583
- FY 2010: \$1,194,417
- FY 2011: \$1,205,073

Where to Find Program Information



- ADOT – Freeway and Highways Statewide
 - http://mpd.azdot.gov/mpd/priority_Programming/Five_Year_Programs.asp
- MAG – Freeways, Arterial Streets & Transit
 - <http://www.azmag.gov/Projects/Project.asp?CMSID2=1140&MID=Transportation>

Thank you !!

Questions ??